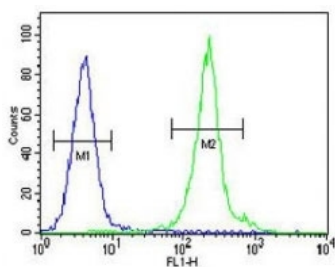


## IL-12B Antibody (F40666)

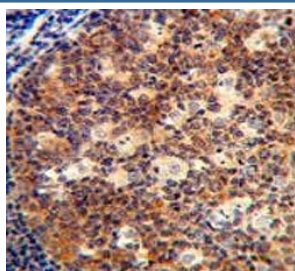
Catalog No.	Formulation	Size
F40666-0.4ML	In 1X PBS, pH 7.4, with 0.09% sodium azide	0.4 ml
F40666-0.08ML	In 1X PBS, pH 7.4, with 0.09% sodium azide	0.08 ml

**Bulk quote request**

<b>Availability</b>	1-3 business days
<b>Species Reactivity</b>	Human
<b>Format</b>	Antigen affinity purified
<b>Clonality</b>	Polyclonal (rabbit origin)
<b>Isotype</b>	Rabbit Ig
<b>Purity</b>	Antigen affinity
<b>UniProt</b>	P29460
<b>Applications</b>	IHC (Paraffin) : 1:50-1:100 Flow Cytometry : 1:10-1:50 Western Blot : 1:1000
<b>Limitations</b>	This IL-12B antibody is available for research use only.



IL-12B antibody flow cytometric analysis of MDA-MB435 cells (green) compared to a [negative control](/search_result.php?search_txt=n1001) (blue). FITC-conjugated goat-anti-rabbit secondary Ab was used for the analysis.



IL-12B antibody immunohistochemistry analysis in formalin fixed and paraffin embedded human tonsil tissue.

## Description

IL12B is a subunit of interleukin 12, a cytokine that acts on T and natural killer cells, and has a broad array of biological activities. Interleukin 12 is a disulfide-linked heterodimer composed of the 40 kD cytokine receptor like subunit encoded by this gene, and a 35 kD subunit encoded by IL12A. This cytokine is expressed by activated macrophages that serve as an essential inducer of Th1 cells development. This cytokine has been found to be important for sustaining a sufficient number of memory/effector Th1 cells to mediate long-term protection to an intracellular pathogen. Overexpression of this gene was observed in the central nervous system of patients with multiple sclerosis (MS), suggesting a role of this cytokine in the pathogenesis of the disease. The promoter polymorphism of this gene has been reported to be associated with the severity of atopic and non-atopic asthma in children.

## Application Notes

Titration of the IL-12B antibody may be required due to differences in protocols and secondary/substrate sensitivity.

## Immunogen

A portion of amino acids 264-290 from the human protein was used as the immunogen for this IL-12B antibody.

## Storage

Aliquot the IL-12B antibody and store frozen at -20oC or colder. Avoid repeated freeze-thaw cycles.