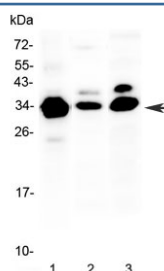


IL-1 beta Antibody (R32817)

Catalog No.	Formulation	Size
R32817	0.5mg/ml if reconstituted with 0.2ml sterile DI water	100 ug

Bulk quote request

Availability	1-3 business days
Species Reactivity	Human, Mouse, Rat
Format	Antigen affinity purified
Clonality	Polyclonal (rabbit origin)
Isotype	Rabbit IgG
Purity	Antigen affinity
Buffer	Lyophilized from 1X PBS with 2% Trehalose
UniProt	P01584
Applications	Western Blot : 0.5-1ug/ml
Limitations	This IL-1 beta antibody is available for research use only.



Western blot testing of 1) human COLO320, 2) rat spleen and 3) mouse NIH3T3 lysate with IL-1 beta antibody at 0.5ug/ml. Predicted molecular weight ~31 kDa.

Description

Interleukin-1 beta (IL-1b) is a potent stimulator of bone resorption whose gene is mapped to 2q14, and has been implicated in the pathogenesis of high bone turnover and osteoporosis. IL-1b, a prominent microglia-derived cytokine, caused oligodendrocyte death in coculture with astrocytes and microglia, but not in pure culture of oligodendrocytes alone. It also can cause nuclear export of a specific NCOR corepressor complex, resulting in derepression of a specific subset of nuclear factor-kappa-B (NFKB)-regulated genes. Furthermore, Microenvironmental IL-1b and, to a lesser extent, IL-1 γ are required for in vivo angiogenesis and invasiveness of different tumor cells. Additional, the cooperation of IL-1b and PDGFB induces contractile-to-synthetic phenotype modulation of human aortic smooth muscle cells in culture. Moreover, the association with disease may be explained by the biologic properties of IL-1b, which is an important

proinflammatory cytokine and a powerful inhibitor of gastric acid secretion.

Application Notes

Optimal dilution of the IL-1 beta antibody should be determined by the researcher.

Immunogen

A recombinant human protein corresponding to amino acids A117-S269 was used as the immunogen for the IL-1 beta antibody.

Storage

After reconstitution, the IL-1 beta antibody can be stored for up to one month at 4°C. For long-term, aliquot and store at -20°C. Avoid repeated freezing and thawing.