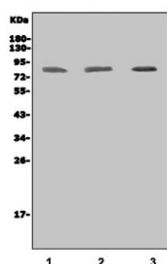


## IKKI Antibody / IKKE / IKBKE (RQ6100)

Catalog No.	Formulation	Size
RQ6100	0.5mg/ml if reconstituted with 0.2ml sterile DI water	100 ug

**Bulk quote request**

<b>Availability</b>	1-3 business days
<b>Species Reactivity</b>	Human
<b>Format</b>	Antigen affinity purified
<b>Clonality</b>	Polyclonal (rabbit origin)
<b>Isotype</b>	Rabbit IgG
<b>Purity</b>	Affinity purified
<b>Buffer</b>	Lyophilized from 1X PBS with 2% Trehalose and 0.025% sodium azide
<b>UniProt</b>	Q14164
<b>Applications</b>	Western Blot : 1-2ug/ml Direct ELISA : 0.1-0.5ug/ml
<b>Limitations</b>	This IKKI antibody is available for research use only.



Western blot testing of human 1) HL60, 2) U-87 MG and 3) A549 cell lysate with IKKI antibody. Predicted molecular weight: 71-80 kDa.

## Description

Inhibitor of nuclear factor kappa-B kinase subunit epsilon also known as I-kappa-B kinase epsilon or IKK-epsilon is an enzyme that in humans is encoded by the IKBKE gene. IKBKE is a noncanonical I-kappa-B kinase (IKK) that is essential for regulating antiviral signaling pathways. IKBKE has also been identified as a breast cancer oncogene and is amplified and overexpressed in over 30% of breast carcinomas and breast cancer cell line.

## Application Notes

Optimal dilution of the IKKI antibody should be determined by the researcher.

## Immunogen

A human recombinant partial protein (amino acids Q318-V716) was used as the immunogen for the IKKI antibody.

## Storage

After reconstitution, the IKKI antibody can be stored for up to one month at 4°C. For long-term, aliquot and store at -20°C. Avoid repeated freezing and thawing.