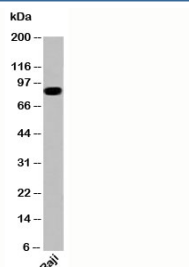


IKKb Antibody [clone IKB355] (N1030)

Catalog No.	Formulation	Size
N1030-100UG	0.5 mg/ml in 1X PBS with 0.1 mg/ml BSA (US sourced), 0.05% sodium azide	100 ug
N1030-25UG	0.5 mg/ml in 1X PBS with 0.1 mg/ml BSA (US sourced), 0.05% sodium azide	25 ug

[Bulk quote request](#)

Species Reactivity	Human, Mouse
Format	Purified
Host	Mouse
Clonality	Monoclonal (mouse origin)
Isotype	Mouse IgG1, kappa
Clone Name	IKB355
Purity	Protein G purified antibody
Buffer	1X PBS, pH 7.4
Gene ID	3551
Applications	Western Blot : 2-4ug/ml
Limitations	This IKKb antibody is available for research use only.



Western blot testing of human samples with IKKb antibody IKB355 at 2ug/ml.

Description

NF- κ B is sequestered in the cytoplasm by I κ Ba, unable to translocate to the nucleus. I κ B is part of the canonical pathway for NF- κ B activation. IKKb is part of the I κ B kinase complex, along with a second catalytic subunit, IKKa, and a regulatory subunit, IKKg. Along with IKKa, IKKb phosphorylates I κ Ba leading to its degradation and release of inhibition of NF- κ B. The RELA subunit of active NF- κ B is then free to enter the nucleus and initiate a number of signaling cascades.

Application Notes

Provided assay concentrations are suggestions only, IKKb antibody titration may be required for optimal results.

Immunogen

A recombinant protein fragment of IKKb was used as the immunogen for this antibody.

Storage

Aliquot the IKKb antibody and store frozen at -20oC or colder. Avoid repeated freeze-thaw cycles.

Alternate Names

I kappa B kinase beta, IKK2, IKBKB, IMD15, NFKB1KB