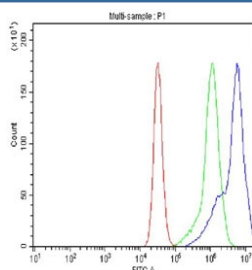


IKKa Antibody / IKK alpha (R30695)

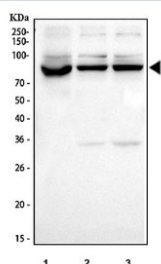
| Catalog No. | Formulation | Size |
|-------------|---|--------|
| R30695 | 0.5mg/ml if reconstituted with 0.2ml sterile DI water | 100 ug |

Bulk quote request

| | |
|---------------------------|---|
| Availability | 1-3 business days |
| Species Reactivity | Human |
| Format | Antigen affinity purified |
| Clonality | Polyclonal (rabbit origin) |
| Isotype | Rabbit IgG |
| Purity | Antigen affinity |
| Buffer | Lyophilized from 1X PBS with 2% Trehalose |
| UniProt | O15111 |
| Applications | Western Blot : 0.5-1ug/ml Flow Cytometry : 1-3ug/million cells |
| Limitations | This IKKa antibody is available for research use only. |



Flow cytometry testing of fixed and permeabilized human Raji cells with IKKa antibody at 1ug/million cells (blocked with goat sera); Red=cells alone, Green=isotype control, Blue=IKKa antibody.



Western blot testing of human 1) Raji, 2) HepG2 and 3) HeLa cell lysate with IKKa antibody. Predicted molecular weight ~85 kDa.

Description

IKBKA, also called CHUK, NFKBKA, IKKA, IKK1, I-KAPPA-B, is a protein kinase that in humans is encoded by the CHUK gene. It is a member of the protein kinase superfamily. The protein contains a serine/threonine kinase domain. IKKa is expressed in a broad array of tissues and high degree of conservation across species. By FISH, the IKBKA gene is mapped to chromosome 10q24. Phosphorylation of serine residues on the I-kappa-B proteins by kinases (IKBKA or IKBKB) marks them for destruction via the ubiquitination pathway, thereby allowing activation of the NF-kappa-B complex. IKKa is part of the I kappa B kinase complex that plays an important role in regulating the NF-kappa B transcription factor.

Application Notes

The stated application concentrations are suggested starting amounts. Titration of the IKKa antibody may be required due to differences in protocols and secondary/substrate sensitivity.

Immunogen

An amino acid sequence from the C-terminus of human IKK alpha (NEEQGNSMMNLDWSWLTE) was used as the immunogen for this IKKa antibody.

Storage

After reconstitution, the IKKa antibody can be stored for up to one month at 4oC. For long-term, aliquot and store at -20oC. Avoid repeated freezing and thawing.