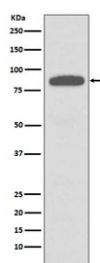


IKK alpha/beta Antibody [clone FCC-3] (RQ4722)

Catalog No.	Formulation	Size
RQ4722	Antibody in PBS with 0.02% sodium azide, 50% glycerol and 0.4-0.5mg/ml BSA	100 ul

[Bulk quote request](#)

Availability	1-2 weeks
Species Reactivity	Human, Mouse, Rat
Format	Purified
Host	Rabbit
Clonality	Rabbit Monoclonal
Isotype	Rabbit IgG
Clone Name	FCC-3
Purity	Affinity purified
UniProt	O15111
Applications	Western Blot : 1:500-1:1000
Limitations	This IKK alpha/beta antibody is available for research use only.



Western blot testing of human A431 cell lysate with IKK alpha/beta antibody. Predicted molecular weight ~85 kDa.

Description

The IkappaB kinase complex is composed of three subunits each encoded by a separate gene: IKK alpha (also known as IKK1 and CHUK), IKK beta (also known as IKK2 and IKBKB), and IKK gamma (also known as NEMO/ and IKBKG). The alpha- and beta- subunits together are catalytically active whereas the gamma-subunit serves a regulatory function. The IKKa and IKKb kinase subunits are homologous in structure, composed of a kinase domain, as well as leucine zipper and helix-loop-helix dimerization domains, and a carboxy-terminal NEMO-binding domain (NBD). [Wiki]

Application Notes

Optimal dilution of the IKK alpha/beta antibody should be determined by the researcher.

Immunogen

A synthetic peptide amino acid sequence specific for and common to human IKK alpha and beta was used as the immunogen for the IKK alpha/beta antibody.

Storage

Store the IKK alpha/beta antibody at -20oC.