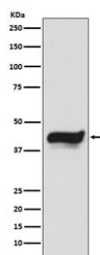


IKB epsilon Antibody / NFKBIE [clone ADCF-14] (RQ4686)

Catalog No.	Formulation	Size
RQ4686	Antibody in PBS with 0.02% sodium azide, 50% glycerol and 0.4-0.5mg/ml BSA	100 ul

[Bulk quote request](#)

Availability	1-2 weeks
Species Reactivity	Human
Format	Purified
Clonality	Rabbit Monoclonal
Isotype	Rabbit IgG
Clone Name	ADCF-14
Purity	Affinity purified
UniProt	O00221
Applications	Western Blot : 1:500-1:2000
Limitations	This IKB epsilon antibody is available for research use only.



Western blot testing of human HeLa cell lysate with IKB epsilon antibody. Expected molecular weight: 38-53 kDa.

Description

Inhibits NF-kappa-B by complexing with and trapping it in the cytoplasm. Inhibits DNA-binding of NF-kappa-B p50-p65 and p50-c-Rel complexes.

Application Notes

Optimal dilution of the IKB epsilon antibody should be determined by the researcher.

Immunogen

A synthetic peptide specific to human IKB epsilon / NFkBIE was used as the immunogen for the IKB epsilon antibody.

Storage

Store the IKB epsilon antibody at -20oC.