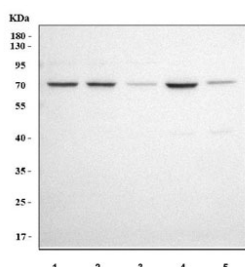


IGSF8 Antibody / Immunoglobulin superfamily member 8 / CD316 (RQ8588)

Catalog No.	Formulation	Size
RQ8588	0.5mg/ml if reconstituted with 0.2ml sterile DI water	100 ug

Bulk quote request

Availability	1-3 days
Species Reactivity	Human, Rat
Format	Antigen affinity purified
Host	Rabbit
Clonality	Polyclonal (rabbit origin)
Isotype	Rabbit IgG
Purity	Antigen affinity purified
Buffer	Lyophilized from 1X PBS with 2% Trehalose
UniProt	Q969P0
Applications	Western Blot : 0.5-1ug/ml ELISA : 0.1-0.5ug/ml
Limitations	This IGSF8 antibody is available for research use only.



Western blot testing of 1) human K562, 2) human 293T, 3) human SH-SY5Y, 4) human HepG2 and 5) rat brain tissue lysate with IGSF8 antibody. Predicted molecular weight ~65 kDa.

Description

Immunoglobulin superfamily member 8 is a protein that in humans is encoded by the IGSF8 gene. This gene encodes a member the EW1 subfamily of the immunoglobulin protein superfamily. Members of this family contain a single transmembrane domain, an EW1 (Glu-Trp-Ile)-motif and a variable number of immunoglobulin domains. This protein interacts with the tetraspanins CD81 and CD9 and may regulate their role in certain cellular functions including cell migration and viral infection. The encoded protein may also function as a tumor suppressor by inhibiting the proliferation of certain cancers. Alternate splicing results in multiple transcript variants that encode the same protein.

Application Notes

Optimal dilution of the IGSF8 antibody should be determined by the researcher.

Immunogen

An E.coli-derived human recombinant protein (amino acids D73-D578) was used as the immunogen for the IGSF8 antibody.

Storage

After reconstitution, the IGSF8 antibody can be stored for up to one month at 4oC. For long-term, aliquot and store at -20oC. Avoid repeated freezing and thawing.