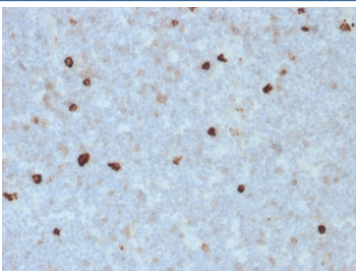


IgM Heavy Chain Antibody [clone R1/69] (V7866)

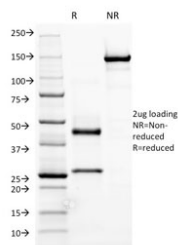
Catalog No.	Formulation	Size
V7866-100UG	0.2 mg/ml in 1X PBS with 0.1 mg/ml BSA (US sourced) and 0.05% sodium azide	100 ug
V7866-20UG	0.2 mg/ml in 1X PBS with 0.1 mg/ml BSA (US sourced) and 0.05% sodium azide	20 ug
V7866SAF-100UG	1 mg/ml in 1X PBS; BSA free, sodium azide free	100 ug

Bulk quote request

Availability	1-3 business days
Species Reactivity	Human
Format	Purified
Host	Mouse
Clonality	Monoclonal (mouse origin)
Isotype	Mouse IgG1, kappa
Clone Name	R1/69
Purity	Protein G affinity chromatography
UniProt	P01871
Applications	Immunohistochemistry (FFPE) : 1-2ug/ml
Limitations	This IgM Heavy Chain antibody is available for research use only.



IHC staining of FFPE human tonsil with IgM Heavy Chain antibody (clone R1/69). HIER: boil tissue sections in pH 9 10mM Tris with 1mM EDTA for 10-20 min and allow to cool before testing.



SDS-PAGE analysis of purified, BSA-free IgM Heavy Chain antibody (clone R1/69) as confirmation of integrity and purity.

Description

Recognizes a protein of 75kDa, identified as mu heavy chain of human immunoglobulins. It does not cross-react with alpha (IgA), gamma (IgG), epsilon (IgE), or delta (IgD), heavy chains, T-cells, monocytes, granulocytes, or erythrocytes. Monomeric IgM is expressed as a membrane bound antibody on the surface of B cells and as a pentamer when secreted by plasma cells. IgM antibody is prominent in early immune responses to most antigens. Aberrant levels are associated with immune deficiency states, hereditary deficiencies, myeloma, Waldenstrom's macroglobulinemia, chronic infection and hepatocellular disease. This MAb is useful in the identification of leukemias, plasmacytomas, and certain non-Hodgkin's lymphomas. The most common feature of these malignancies is the restricted expression of a single heavy chain class. Demonstration of clonality in lymphoid infiltrates indicates that the infiltrate is clonal and therefore malignant.

Application Notes

Optimal dilution of the IgM Heavy Chain antibody should be determined by the researcher.

Immunogen

Heavy chain of human IgM was used as the immunogen for the IgM Heavy Chain antibody.

Storage

Store the IgM Heavy Chain antibody at 2-8oC (with azide) or aliquot and store at -20oC or colder (without azide).