

## IGHM Antibody (F50440)

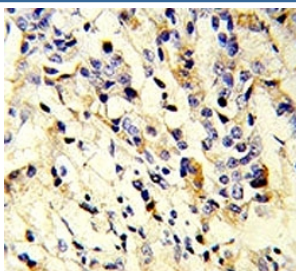
Catalog No.	Formulation	Size
F50440-0.4ML	In 1X PBS, pH 7.4, with 0.09% sodium azide	0.4 ml
F50440-0.08ML	In 1X PBS, pH 7.4, with 0.09% sodium azide	0.08 ml

[Bulk quote request](#)

<b>Availability</b>	1-3 business days
<b>Species Reactivity</b>	Human
<b>Format</b>	Purified
<b>Host</b>	Rabbit
<b>Clonality</b>	Polyclonal (rabbit origin)
<b>Isotype</b>	Rabbit Ig
<b>Purity</b>	Purified
<b>UniProt</b>	P01871
<b>Applications</b>	Western Blot : 1:1000 IHC (Paraffin) : 1:50-1:100
<b>Limitations</b>	This IGHM antibody is available for research use only.

72  
55  
36  
28

Western blot analysis of IGHM antibody and T47D lysate.



IHC analysis of FFPE human breast carcinoma stained with IGHM antibody

## Description

IgM antibodies play an important role in primary defense mechanisms. They have been shown to be involved in early recognition of external invaders like bacteria and viruses, cellular waste and modified self, as well as in recognition and elimination of precancerous and cancerous lesions. The membrane-bound form is found in the majority of normal B-cells alongside with IgD. Membrane-bound IgM induces the phosphorylation of CD79A and CD79B by the Src family of protein tyrosine kinases. It may cause death of cells by apoptosis. It is also found in soluble form, which represents about 30% of the total serum immunoglobulins where it is found almost exclusively as a homopentamer. After the antigen binds to the B-cell receptor, the secreted form is secreted in large amounts. [UniProt]

## Application Notes

Titration of the IGHM antibody may be required due to differences in protocols and secondary/substrate sensitivity.

## Immunogen

A portion of amino acids 103-131 from the human protein was used as the immunogen for this IGHM antibody.

## Storage

Aliquot the IGHM antibody and store frozen at -20°C or colder. Avoid repeated freeze-thaw cycles.