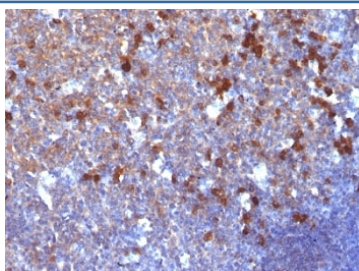


## IgG Antibody [clone IG217] (V3147)

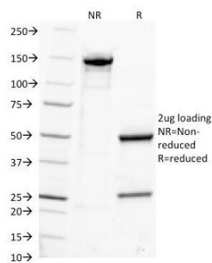
Catalog No.	Formulation	Size
V3147-100UG	0.2 mg/ml in 1X PBS with 0.1 mg/ml BSA (US sourced) and 0.05% sodium azide	100 ug
V3147-20UG	0.2 mg/ml in 1X PBS with 0.1 mg/ml BSA (US sourced) and 0.05% sodium azide	20 ug
V3147SAF-100UG	1 mg/ml in 1X PBS; BSA free, sodium azide free	100 ug
V3147IHC-7ML	Prediluted in 1X PBS with 0.1 mg/ml BSA (US sourced) and 0.05% sodium azide; *For IHC use only*	7 ml

[Bulk quote request](#)

<b>Availability</b>	1-3 business days
<b>Species Reactivity</b>	Human
<b>Format</b>	Purified
<b>Clonality</b>	Monoclonal (mouse origin)
<b>Isotype</b>	Mouse IgG1, kappa
<b>Clone Name</b>	IG217
<b>Purity</b>	Protein G affinity chromatography
<b>UniProt</b>	P01857, P01859, P01860, P01861
<b>Localization</b>	Cytoplasm, Cell Surface and Secreted
<b>Applications</b>	Immunohistochemistry (FFPE) : 1-2ug/ml for 30 min at RT (1) (2)
<b>Limitations</b>	This IgG antibody is available for research use only.



IHC: Formalin-fixed, paraffin-embedded human tonsil stained with IgG antibody (clone IG217).



SDS-PAGE Analysis of Purified, BSA-Free IgG Antibody (clone IG217). Confirmation of Integrity and Purity of the Antibody.

## Description

Recognizes a protein of 75kDa, identified as gamma heavy chain of human immunoglobulins. It reacts with all sub-classes of gamma chain of human immunoglobulins. It does not cross-react with alpha (IgA), mu (IgM), epsilon (IgE), or delta (IgD), heavy chains, T-cells, monocytes, granulocytes, or erythrocytes. This mAb is useful in the identification of leukemias, plasmacytomas, and certain non-Hodgkin's lymphomas. The most common feature of these malignancies is the restricted expression of a single heavy chain class. Demonstration of clonality in lymphoid infiltrates indicates that the infiltrate is clonal and therefore malignant.

## Application Notes

The optimal dilution of the IgG antibody for each application should be determined by the researcher.

1. Staining of formalin-fixed tissues requires boiling tissue sections in 10mM citrate buffer, pH 6.0, for 10-20 min followed by cooling at RT for 20 minutes.
2. The prediluted format is supplied in a dropper bottle and is optimized for use in IHC. After epitope retrieval step (if required), drip mAb solution onto the tissue section and incubate at RT for 30 min.

## Immunogen

Purified human Ig Gamma Chain was used as the immunogen for this IgG antibody.

## Storage

Store the IgG antibody at 2-8oC (with azide) or aliquot and store at -20oC or colder (without azide).