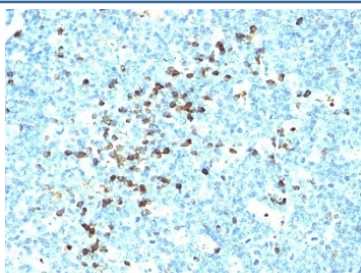


IgG Antibody Cocktail [clone IG217 + IG266] (V3150)

Catalog No.	Formulation	Size
V3150-100UG	0.2 mg/ml in 1X PBS with 0.1 mg/ml BSA (US sourced) and 0.05% sodium azide	100 ug
V3150-20UG	0.2 mg/ml in 1X PBS with 0.1 mg/ml BSA (US sourced) and 0.05% sodium azide	20 ug
V3150SAF-100UG	1 mg/ml in 1X PBS; BSA free, sodium azide free	100 ug
V3150IHC-7ML	Prediluted in 1X PBS with 0.1 mg/ml BSA (US sourced) and 0.05% sodium azide; *For IHC use only*	7 ml

[Bulk quote request](#)

Availability	1-3 business days
Species Reactivity	Human
Format	Purified
Clonality	Monoclonal (mouse origin)
Isotype	Mouse IgG1 + IgG2a
Clone Name	IG217 + IG266
Purity	Protein G affinity chromatography
UniProt	P01857, P01859, P01860, P01861
Localization	Cytoplasm, Cell Surface and Secreted
Applications	Flow Cytometry : 1ug/10 ⁶ cells Immunofluorescence : 0.5-1ug/ml Immunohistochemistry (FFPE) : 0.5-1ug/ml for 30 min at RT
Limitations	This IgG antibody cocktail is available for research use only.



IHC: Formalin-fixed, paraffin-embedded human tonsil stained with IgG antibody (IG217 + IG266)

Description

This mAb is specific to heavy chain of IgG and shows minimal cross-reaction with heavy chains of other immunoglobulins. It is reactive with all subclasses of gamma heavy chain (IgG1, IgG2a, IgG2b, IgG3). The most common feature of plasmacytomas, and certain non-Hodgkin's lymphomas is the restricted expression of a single heavy chain class. Demonstration of clonality in lymphoid infiltrates indicates that the infiltrate is clonal and therefore malignant. Ab-3 is superb for staining of formalin-fixed tissues.

Application Notes

Immunogen

Purified human IgG was used as the immunogen for this IgG antibody.

Storage

Store the IgG antibody cocktail at 2-8oC (with azide) or aliquot and store at -20oC or colder (without azide).