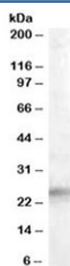


IGFBP6 Antibody (R35715)

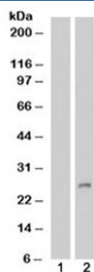
Catalog No.	Formulation	Size
R35715-100UG	0.5 mg/ml in 1X TBS, pH7.3, with 0.5% BSA (US sourced) and 0.02% sodium azide	100 ug

[Bulk quote request](#)

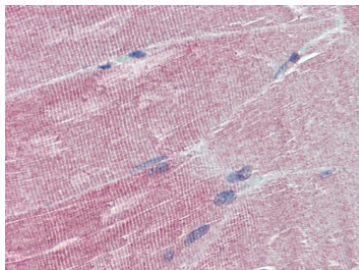
Availability	1-3 business days
Species Reactivity	Human
Predicted Reactivity	Cow
Format	Antigen affinity purified
Host	Goat
Clonality	Polyclonal (goat origin)
Isotype	Goat Ig
Purity	Antigen affinity
Gene ID	3489
Localization	Cytoplasmic
Applications	Western Blot : 0.5-2ug/ml IHC (FFPE) : 5ug/ml ELISA (peptide) LOD : 1:32000
Limitations	This IGFBP6 antibody is available for research use only.



Western blot testing of human adrenal gland lysate with IGFBP6 antibody at 0.5ug/ml.
Predicted molecular weight: ~23-25 kDa.



Western blot of HEK293 lysate overexpressing IGFBP6 probed with IGFBP6 antibody (mock transfection in lane 1). Predicted molecular weight: ~23-25 kDa.



IHC testing of FFPE human skeletal muscle tissue with IGFBP6 antibody at 5ug/ml. Required HIER: steamed antigen retrieval with pH6 citrate buffer; AP-staining.

Description

Additional name(s) for this target protein: Insulin-like growth factor binding protein 6

Application Notes

Optimal dilution of the IGFBP6 antibody should be determined by the researcher.

Immunogen

Amino acids RPQDVNRRDQQRNP were used as the immunogen for this IGFBP6 antibody.

Storage

Aliquot and store the IGFBP6 antibody at -20oC.