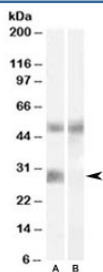


IGFBP3 Antibody (R35822)

Catalog No.	Formulation	Size
R35822-100UG	0.5 mg/ml in 1X TBS, pH7.3, with 0.5% BSA (US sourced) and 0.02% sodium azide	100 ug

[Bulk quote request](#)

Availability	1-3 business days
Species Reactivity	Human
Predicted Reactivity	Mouse, Rat, Dog
Format	Antigen affinity purified
Clonality	Polyclonal (goat origin)
Isotype	Goat Ig
Purity	Antigen affinity
Gene ID	3486
Localization	Secreted
Applications	Western Blot : 0.02-0.06ug/ml ELISA (peptide) LOD : 1:64000
Limitations	This IGFBP3 antibody is available for research use only.



Western blot testing of human breast cancer lysate with IGFBP3 antibody at 0.02ug/ml with [B] and without [A] blocking/immunizing peptide. The glycoprotein is visualized between 31~44 kDa.

Description

Additional name(s) for this target protein: Insulin-like growth factor binding protein 3

Application Notes

Optimal dilution of the IGFBP3 antibody should be determined by the researcher.

Immunogen

Amino acids RYKVDYESQSTDTQN were used as the immunogen for this IGFBP3 antibody.

Storage

Aliquot and store the IGFBP3 antibody at -20oC.