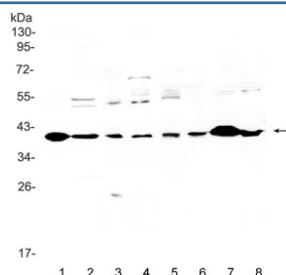


## IGFBP3 Antibody (R31990)

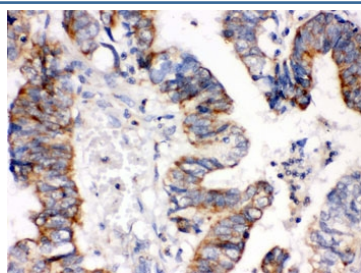
Catalog No.	Formulation	Size
R31990	0.5mg/ml if reconstituted with 0.2ml sterile DI water	100 ug

**Bulk quote request**

<b>Availability</b>	1-3 business days
<b>Species Reactivity</b>	Human, Mouse, Rat
<b>Format</b>	Antigen affinity purified
<b>Clonality</b>	Polyclonal (rabbit origin)
<b>Isotype</b>	Rabbit IgG
<b>Purity</b>	Antigen affinity
<b>Buffer</b>	Lyophilized from 1X PBS with 2.5% BSA and 0.025% sodium azide
<b>UniProt</b>	P17936
<b>Localization</b>	Secreted
<b>Applications</b>	Western Blot : 0.1-0.5ug/ml IHC (FFPE) : 0.5-1ug/ml ELISA : 0.1-0.5ug/ml (human protein tested); request BSA-free format for coating
<b>Limitations</b>	This IGFBP3 antibody is available for research use only.



Western blot testing of 1) rat heart, 2) rat brain, 3) rat liver, 4) rat PC-12, 5) human U-87 MG, 6) mouse kidney, 7) mouse heart and 8) mouse brain lysate with IGFBP3 antibody. Expected molecular weight: 31-44 kDa depending on level of glycosylation.



IHC testing of FFPE human intestinal cancer tissue with IGFBP3 antibody. HIER: Boil the paraffin sections in pH 6, 10mM citrate buffer for 20 minutes and allow to cool prior to staining.

## Description

IGFBP3, Insulin-like growth factor-binding protein 3, is a member of the insulin-like growth factor binding protein (IGFBP) family and encodes a protein with an IGFBP domain and a thyroglobulin type-I domain. IGFBP3 is located on chromosome 7. The protein forms a ternary complex with insulin-like growth factor acid-labile subunit (IGFALS) and either insulin-like growth factor (IGF) I or II. In this form, it circulates in the plasma, prolonging the half-life of IGFs and altering their interaction with cell surface receptors. Alternate transcriptional splice variants, encoding different isoforms, have been characterized.

## Application Notes

Optimal dilution of the IGFBP3 antibody should be determined by the researcher.

## Immunogen

Amino acids RREMEDTLNHLKFLNVLSPRGVHIPNCDKKGIFYKKKQCR of human IGFBP3 were used as the immunogen for the IGFBP3 antibody.

## Storage

After reconstitution, the IGFBP3 antibody can be stored for up to one month at 4°C. For long-term, aliquot and store at -20°C. Avoid repeated freezing and thawing.