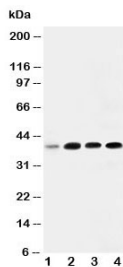


IGFBP3 Antibody (R30571)

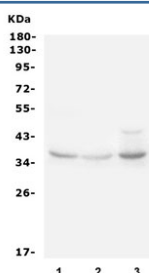
Catalog No.	Formulation	Size
R30571	0.5mg/ml if reconstituted with 0.2ml sterile DI water	100 ug

[Bulk quote request](#)

Availability	1-3 business days
Species Reactivity	Human, Rat
Format	Antigen affinity purified
Host	Rabbit
Clonality	Polyclonal (rabbit origin)
Isotype	Rabbit IgG
Purity	Antigen affinity
Buffer	Lyophilized from 1X PBS with 2.5% BSA and 0.025% sodium azide/thimerosal
UniProt	P17936
Localization	Secreted
Applications	Western Blot : 0.5-1ug/ml
Limitations	This IGFBP3 antibody is available for research use only.



Western blot testing of IGFBP3 antibody and Lane 1: 293T; 2: MCF- 7; 3: A549; 4: SW620. Expected molecular weight: ~31/40-44 kDa (unmodified/glycosylated).



Western blot testing of rat 1) liver, 2) kidney and 3) heart lysate with IGFBP3 antibody. Expected molecular weight: ~31/40-44 kDa (unmodified/glycosylated).

Description

Insulin-like growth factor-binding protein 3, is a member of the insulin-like growth factor binding protein (IGFBP) family and encodes a protein with an IGFBP domain and a thyroglobulin type-I domain. IGFBP3 is located on chromosome 7. The protein forms a ternary complex with insulin-like growth factor acid-labile subunit (IGFALS) and either insulin-like growth factor (IGF) I or II. In this form, it circulates in the plasma, prolonging the half-life of IGFs and altering their interaction with cell surface receptors. Alternate transcriptional splice variants, encoding different isoforms, have been characterized.

Application Notes

The stated application concentrations are suggested starting amounts. Titration of the IGFBP3 antibody may be required due to differences in protocols and secondary/substrate sensitivity.

Immunogen

An amino acid sequence from the middle region of human IGFBP3 (IKKGHAKDSQRYKVDYE) was used as the immunogen for this IGFBP3 antibody.

Storage

After reconstitution, the IGFBP3 antibody can be stored for up to one month at 4oC. For long-term, aliquot and store at -20oC. Avoid repeated freezing and thawing.