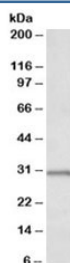


IGFBP1 Antibody (R35639)

Catalog No.	Formulation	Size
R35639-100UG	0.5 mg/ml in 1X TBS, pH7.3, with 0.5% BSA (US sourced) and 0.02% sodium azide	100 ug

[Bulk quote request](#)

Availability	1-3 business days
Species Reactivity	Human
Format	Antigen affinity purified
Host	Goat
Clonality	Polyclonal (goat origin)
Isotype	Goat Ig
Purity	Antigen affinity
Gene ID	3484
Localization	Cytoplasmic, secreted
Applications	Western Blot : 0.1-0.3ug/ml ELISA (peptide) LOD : 1:128000
Limitations	This IGFBP1 antibody is available for research use only.



Western blot testing of human placenta lysate with IGFBP1 antibody at 0.1ug/ml.
Expected molecular weight: 28-35 kDa.

Description

Additional name(s) for this target protein: Insulin-like growth factor binding protein 1

Application Notes

Optimal dilution of the IGFBP1 antibody should be determined by the researcher.

Immunogen

Amino acids RIPGSPEIRGDPNCQ were used as the immunogen for this IGFBP1 antibody.

Storage

Aliquot and store the IGFBP1 antibody at -20oC.