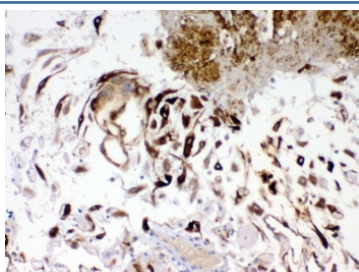


## IGFBP1 Antibody (R32673)

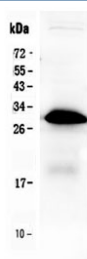
Catalog No.	Formulation	Size
R32673	0.5mg/ml if reconstituted with 0.2ml sterile DI water	100 ug

**Bulk quote request**

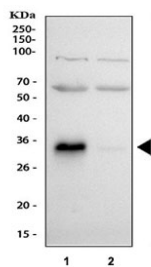
<b>Availability</b>	1-3 business days
<b>Species Reactivity</b>	Human
<b>Format</b>	Antigen affinity purified
<b>Host</b>	Rabbit
<b>Clonality</b>	Polyclonal (rabbit origin)
<b>Isotype</b>	Rabbit IgG
<b>Purity</b>	Antigen affinity
<b>Buffer</b>	Lyophilized from 1X PBS with 2% Trehalose and 0.025% sodium azide
<b>UniProt</b>	P08833
<b>Localization</b>	Cytoplasmic, secreted
<b>Applications</b>	Western Blot : 0.5-1ug/ml Immunohistochemistry (FFPE) : 2-5ug/ml
<b>Limitations</b>	This IGFBP1 antibody is available for research use only.



IHC testing of FFPE human placenta tissue with IGFBP1 antibody. Required HIER: steam section in pH8 EDTA buffer for 20 min and allow to cool prior to testing.



Western blot testing of human placenta tissue lysate with IGFBP1 antibody at 0.5ug/ml. Expected molecular weight: 28-35 kDa.



Western blot testing of human 1) HepG2 and 2) A549 cell lysate with IGFBP1 antibody at 0.5ug/ml. Expected molecular weight: 28-35 kDa.

## Description

IGFBP1, Insulin-like growth factor-binding protein 1, also known as placental protein 12 (PP12), is a protein that in humans is encoded by the IGFBP1 gene. The gene has 4 exons and spans 5.9 kb. And the IGFBP1 gene is localized to 7p13-p12 by in situ hybridization. This gene is a member of the Insulin-like growth factor-binding protein (IGFBP) family and encodes a protein with an IGFBP domain and a type-I thyroglobulin domain. The protein binds both insulin-like growth factors (IGFs) I and II and circulates in the plasma. Binding of this protein prolongs the half-life of the IGFs and alters their interaction with cell surface receptors. Alternate transcriptional splice variants, encoding different isoforms, have been characterized.

## Application Notes

Optimal dilution of the IGFBP1 antibody should be determined by the researcher.

## Immunogen

Amino acids A69-N259 from the human protein were used as the immunogen for the IGFBP1 antibody.

## Storage

After reconstitution, the IGFBP1 antibody can be stored for up to one month at 4°C. For long-term, aliquot and store at -20°C. Avoid repeated freezing and thawing.