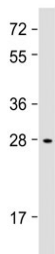


IGFBP1 Antibody (Center Region) (F54175)

Catalog No.	Formulation	Size
F54175-0.2ML	In 1X PBS, pH 7.4, with 0.09% sodium azide	0.2 ml
F54175-0.05ML	In 1X PBS, pH 7.4, with 0.09% sodium azide	0.05 ml

[Bulk quote request](#)

Availability	1-3 business days
Species Reactivity	Human
Format	Antigen affinity purified
Host	Rabbit
Clonality	Polyclonal (rabbit origin)
Isotype	Rabbit Ig
Purity	Antigen affinity
UniProt	P08833
Localization	Cytoplasmic, secreted
Applications	Western Blot : 1:1000-1:2000
Limitations	This IGFBP1 antibody is available for research use only.



Western blot testing of human Li-7 cell lysate with IGFBP1 antibody at 1:2000. Expected molecular weight: 28-35 kDa.

Description

IGF-binding proteins prolong the half-life of the IGFs and have been shown to either inhibit or stimulate the growth promoting effects of the IGFs on cell culture. They alter the interaction of IGFs with their cell surface receptors. Promotes cell migration.

Application Notes

The stated application concentrations are suggested starting points. Titration of the IGFBP1 antibody may be required due to differences in protocols and secondary/substrate sensitivity.

Immunogen

A portion of amino acids 140-174 from human IGFBP1 was used as the immunogen for the IGFBP1 antibody.

Storage

Aliquot the IGFBP1 antibody and store frozen at -20oC or colder. Avoid repeated freeze-thaw cycles.