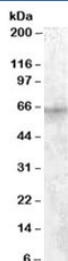


## IGF2BP2 Antibody (R34598)

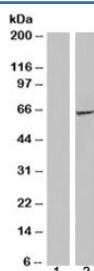
Catalog No.	Formulation	Size
R34598-100UG	0.5 mg/ml in 1X TBS, pH7.3, with 0.5% BSA (US sourced) and 0.02% sodium azide	100 ug

[Bulk quote request](#)

Availability	1-3 business days
Species Reactivity	Human
Predicted Reactivity	Dog, Mouse
Format	Antigen affinity purified
Host	Goat
Clonality	Polyclonal (goat origin)
Isotype	Goat Ig
Purity	Antigen affinity
Gene ID	10644
Applications	Western Blot : 1-3ug/ml ELISA (peptide) LOD : 1:16000
Limitations	This IGF2BP2 antibody is available for research use only.



Western blot testing of HepG2 cell lysate with IGF2BP2 antibody at 1 ug/ml. Predicted molecular weight: ~66kDa.



Western blot of HEK293 lysate overexpressing IGF2BP2 probed with IGF2BP2 antibody (mock transfection in lane 1). Predicted molecular weight: ~66kDa.

## Description

Additional name(s) for this target protein: Insulin-like growth factor 2 mRNA binding protein 2

## Application Notes

Optimal dilution of the IGF2BP2 antibody should be determined by the researcher.

## Immunogen

Amino acids KQEQKYPQGVASQR were used as the immunogen for this IGF2BP2 antibody.

## Storage

Aliquot and store the IGF2BP2 antibody at -20oC.