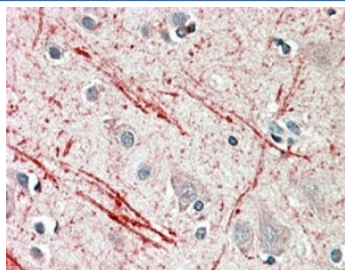


## IGF2 Antibody (R34029)

| Catalog No.  | Formulation   | Size   |
|--------------|---|--------|
| R34029-100UG | 0.5 mg/ml in 1X TBS, pH7.3, with 0.5% BSA (US sourced) and 0.02% sodium azide | 100 ug |

[Bulk quote request](#)

|                      |  |
|----------------------|--|
| Availability         | 1-3 business days  |
| Species Reactivity   | Human  |
| Predicted Reactivity | Cow, Dog, Mouse, Pig, Rat  |
| Format               | Antigen affinity purified  |
| Host                 | Goat   |
| Clonality            | Polyclonal (goat origin)   |
| Isotype              | Goat Ig  |
| Purity               | Antigen affinity   |
| Gene ID              | 3481   |
| Applications         | Immunohistochemistry (FFPE) : 5-10ug/ml<br>ELISA (peptide) LOD : 1:64000 |
| Limitations          | This IGF2 antibody is available for research use only.                   |



IHC testing of FFPE human cerebellum with IGF2 antibody at 5ug/ml. HIER: steamed with pH6 citrate buffer, AP-staining.

### Description

Additional name(s) for this target protein: Insulin-like growth factor 2

### Application Notes

Optimal dilution of the IGF2 antibody should be determined by the researcher.

## Immunogen

Amino acids ETYCATPAKSERD were used as the immunogen for this IGF2 antibody.

## Storage

Aliquot and store the IGF2 antibody at -20oC.