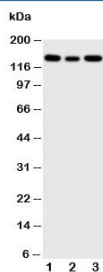


IGF1R Antibody (R30838)

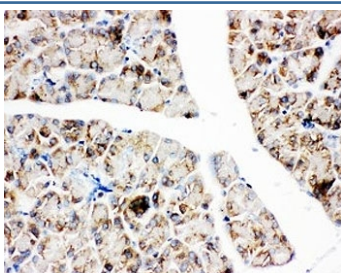
Catalog No.	Formulation	Size
R30838	0.5mg/ml if reconstituted with 0.2ml sterile DI water	100 ug

[Bulk quote request](#)

Availability	1-3 business days
Species Reactivity	Human, Mouse, Rat
Format	Antigen affinity purified
Host	Rabbit
Clonality	Polyclonal (rabbit origin)
Isotype	Rabbit IgG
Purity	Antigen affinity
Buffer	Lyophilized from 1X PBS with 2.5% BSA and 0.025% sodium azide/thimerosal
UniProt	P08069
Applications	Western Blot : 0.5-1ug/ml IHC (FFPE) : 0.5-1ug/ml
Limitations	This IGF1R antibody is available for research use only.



Western blot testing of IGF1R antibody and Lane 1: 293T; 2: A549; 3: MCF-7 cell lysate.
Predicted molecular weight: ~200 kDa (pro), 120-130 kDa (alpha), 90-97 kDa (beta).



IHC-P: IGF1R antibody testing of rat pancreas tissue

Description

Insulin-like Growth Factor 1 Receptor is a protein found on the surface of human cells. It is a transmembrane receptor that is activated by a hormone called Insulin-like growth factor 1(IGF-1) and by a related hormone called IGF-2. It belongs to the large class of tyrosine kinase receptors. IGF-1 plays an important role in growth and continues to have anabolic effects in adults - meaning that it can induce hypertrophy of skeletal muscle and other target tissues. Using a yeast 2-hybrid system, Dey et al.(1998) identified a regulatory subunit of phosphatidylinositol(PI) 3-kinase, PIK3R3, as a binding partner of IGF1R. Functional interaction between BRCA1 and SP1 in the regulation of the IGF1R gene was studied in Schneider cells, a Drosophila cell line which lacks endogenous SP1. In these cells, BRCA1 suppressed 45% of the SP1-induced trans-activation of the IGF1R promoter. Overexpression of the Grb10-binding fragment of Gggyf1 resulted in a significant increase in Igf1-stimulated Igf1r tyrosine phosphorylation. Like the insulin receptor, the IGF-1 receptor is a receptor tyrosine kinase - meaning it signals by causing the addition of a phosphate molecule on particular tyrosines. IGF-1 activates the Insulin receptor at approximately 0.1x the potency of insulin. Part of this signaling may be via IGF1R-Insulin Receptor heterodimers.

Application Notes

The stated application concentrations are suggested starting amounts. Titration of the IGF1R antibody may be required due to differences in protocols and secondary/substrate sensitivity.

Immunogen

An amino acid sequence from the C-terminus of human IGF1 Receptor (RKNERALPLQSSTC) was used as the immunogen for this IGF1R antibody.

Storage

After reconstitution, the IGF1R antibody can be stored for up to one month at 4oC. For long-term, aliquot and store at -20oC. Avoid repeated freezing and thawing.