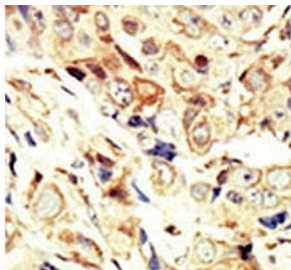


IGF1R Antibody (F50633)

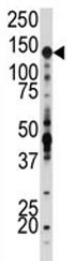
Catalog No.	Formulation	Size
F50633-0.4ML	In 1X PBS, pH 7.4, with 0.09% sodium azide	0.4 ml
F50633-0.08ML	In 1X PBS, pH 7.4, with 0.09% sodium azide	0.08 ml

[Bulk quote request](#)

Availability	1-3 business days
Species Reactivity	Human
Predicted Reactivity	Mouse, Rat
Format	Purified
Host	Rabbit
Clonality	Polyclonal (rabbit origin)
Isotype	Rabbit Ig
Purity	Purified
UniProt	P08069
Applications	Western Blot : 1:1000 IHC (Paraffin) : 1:50-1:100
Limitations	This IGF1R antibody is available for research use only.



IHC analysis of FFPE human breast carcinoma tissue stained with the IGF1R antibody



Western blot analysis of IGF1R antibody and SK-BR-3 lysate. Predicted molecular weight: ~200 kDa (pro), 120-130 kDa (alpha), 90-97 kDa (beta).

Description

The IGF1 receptor binds insulin-like growth factor with a high affinity and plays a critical role in transformation events. Cleavage of the precursor generates alpha and beta subunits. It is highly overexpressed in most malignant tissues where it functions as an anti-apoptotic agent by enhancing cell survival. The protein possess tyrosine kinase activity.

Application Notes

Titration of the IGF1R antibody may be required due to differences in protocols and secondary/substrate sensitivity.

Immunogen

A portion of amino acids 19-51 from the human protein was used as the immunogen for this IGF1R antibody.

Storage

Aliquot the IGF1R antibody and store frozen at -20oC or colder. Avoid repeated freeze-thaw cycles.