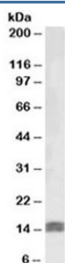


## IGF1 Antibody (R35781)

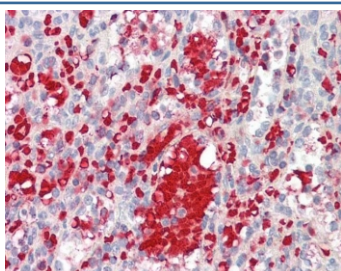
| Catalog No.  | Formulation   | Size   |
|--------------|---|--------|
| R35781-100UG | 0.5 mg/ml in 1X TBS, pH7.3, with 0.5% BSA (US sourced) and 0.02% sodium azide | 100 ug |

[Bulk quote request](#)

|                    |   |
|--------------------|---|
| Availability       | 1-3 business days   |
| Species Reactivity | Human   |
| Format             | Antigen affinity purified   |
| Clonality          | Polyclonal (goat origin)  |
| Isotype            | Goat Ig   |
| Purity             | Antigen affinity  |
| Gene ID            | 3479  |
| Localization       | Cytoplasmic, secreted   |
| Applications       | Western Blot : 0.5-2ug/ml<br>IHC (FFPE) : 3-6ug/ml<br>ELISA (peptide) LOD : 1:32000 |
| Limitations        | This IGF1 antibody is available for research use only.                              |



Western blot testing of human uterus lysate with IGF1 antibody at 0.5ug/ml. Predicted molecular weight ~15 kDa.



IHC testing of FFPE human spleen tissue with IGF1 antibody at 3.75ug/ml. HIER: steamed antigen retrieval with pH6 citrate buffer; AP-staining.

## Description

Additional name(s) for this target protein: Insulin-like growth factor 1

## Application Notes

Optimal dilution of the IGF1 antibody should be determined by the researcher.

## Immunogen

Amino acids RSVRAQRHTD were used as the immunogen for this IGF1 antibody.

## Storage

Aliquot and store the IGF1 antibody at -20oC.