

## IGF1 Antibody [clone M23] (V2139)

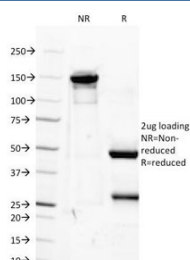
Catalog No.	Formulation	Size
V2139-100UG	0.2 mg/ml in 1X PBS with 0.1 mg/ml BSA (US sourced) and 0.05% sodium azide	100 ug
V2139-20UG	0.2 mg/ml in 1X PBS with 0.1 mg/ml BSA (US sourced) and 0.05% sodium azide	20 ug
V2139SAF-100UG	1 mg/ml in 1X PBS; BSA free, sodium azide free	100 ug



Citations (12)

[Bulk quote request](#)

<b>Species Reactivity</b>	Human, Mouse, Rat
<b>Format</b>	Purified
<b>Host</b>	Mouse
<b>Clonality</b>	Monoclonal (mouse origin)
<b>Isotype</b>	Mouse IgG1, kappa
<b>Clone Name</b>	M23
<b>Purity</b>	Protein G affinity chromatography
<b>Buffer</b>	1X PBS, pH 7.4
<b>Gene ID</b>	3479
<b>Localization</b>	Cytoplasmic (Secreted)
<b>Applications</b>	Flow Cytometry : 0.5-1ug/10 <sup>6</sup> cells Immunofluorescence : 1-2ug/ml In-vitro Neutralization Of Biological Activity Of IGF-1 (order BSA/sodium Azide-free Format) :
<b>Limitations</b>	This IGF1 antibody is available for research use only.



SDS-PAGE Analysis of Purified, BSA-Free IGF1 Antibody (clone M23). Confirmation of Integrity and Purity of the Antibody.

## Description

This antibody is specific to IGF1 (Insulin like Growth Factor 1) and shows minimal cross-reaction with IGF11, Proinsulin, MSF, and Insulin. IGF1 is a polypeptide growth factor with two isoforms that are produced by alternative splicing. Isoform 1 is also known as IGF1B while isoform 2 is known as IGF1A. IGF1 stimulates the proliferation of a wide range of cell types including muscle, bone and cartilage tissue. It functions as an autocrine regulator of growth. Activation of the IGF system has emerged as a key factor for tumor progression and resistance to apoptosis in many cancers like those of breast, thyroid and colon.

## Application Notes

The concentration stated for each application is a general starting point. Variations in protocols, secondaries and substrates may require the antibody to be titrated up or down for optimal performance.

## Immunogen

Purified human IGF1 protein was used as the immunogen for this antibody.

## Storage

Store the IGF1 antibody at 2-8oC (with azide) or aliquot and store at -20oC or colder (without azide).

## References (2)