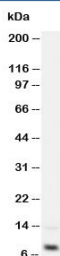


IGF-1 Antibody (R30443)

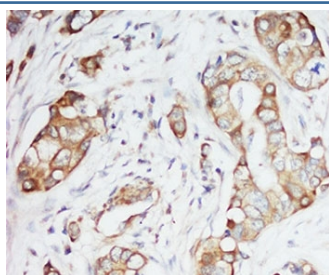
Catalog No.	Formulation	Size
R30443	0.5mg/ml if reconstituted with 0.2ml sterile DI water	100 ug

Bulk quote request

Availability	1-3 business days
Species Reactivity	Human, Mouse, Rat
Format	Antigen affinity purified
Host	Rabbit
Clonality	Polyclonal (rabbit origin)
Isotype	Rabbit IgG
Purity	Antigen affinity
Buffer	Lyophilized from 1X PBS with 2% Trehalose
UniProt	P05019
Applications	Western Blot : 0.5-1ug/ml Immunohistochemistry (FFPE) : 0.5-1ug/ml
Limitations	This IGF-1 antibody is available for research use only.



Western blot testing of IGF-1 antibody and recombinant human protein 2.5ng



IHC-P: IGF-1 antibody testing of human breast cancer tissue

Description

Insulin-like growth factor 1, also known as somatomedin C or mechano growth factor is a protein that in humans is encoded by the IGF1 gene. IGF-1 is a hormone similar in molecular structure to insulin. It plays an important role in childhood growth and continues to have anabolic effects in adults. A synthetic analog of the protein, mecasermin, is used for the treatment of growth failure. IGF-1 consists of 70 amino acids in a single chain with three intramolecular disulfide bridges.

Application Notes

The stated application concentrations are suggested starting amounts. Titration of the IGF-1 antibody may be required due to differences in protocols and secondary/substrate sensitivity.

Immunogen

An amino acid sequence from the middle region of human IGF-1 (GSSSRAPQTGIVDECC) was used as the immunogen for this IGF-1 antibody.

Storage

After reconstitution, the IGF-1 antibody can be stored for up to one month at 4°C. For long-term, aliquot and store at -20°C. Avoid repeated freezing and thawing.