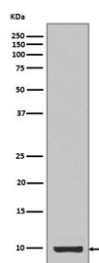


IGF-1 Antibody / Insulin like Growth Factor 1 [clone DBG-9] (RQ5095)

Catalog No.	Formulation	Size
RQ5095	Antibody in PBS with 0.02% sodium azide, 50% glycerol and 0.4-0.5mg/ml BSA	100 ul

[Bulk quote request](#)

Availability	1-2 weeks
Species Reactivity	Human
Format	Purified
Host	Rabbit
Clonality	Rabbit Monoclonal
Isotype	Rabbit IgG
Clone Name	DBG-9
Purity	Affinity purified
UniProt	P05019
Applications	Western Blot : 1:500-1:2000
Limitations	This IGF1 antibody is available for research use only.



Western blot testing of recombinant partial protein with IGF1 antibody.

Description

The protein encoded by the IGF1 gene is similar to insulin in function and structure and is a member of a family of proteins involved in mediating growth and development. The encoded protein is processed from a precursor, bound by a specific receptor, and secreted. Defects in this gene are a cause of insulin-like growth factor I deficiency. [RefSeq]

Application Notes

Optimal dilution of the IGF1 antibody should be determined by the researcher.

Immunogen

A synthetic peptide specific to human IGF1 was used as the immunogen for the IGF1 antibody.

Storage

Store the IGF1 antibody at -20oC.