

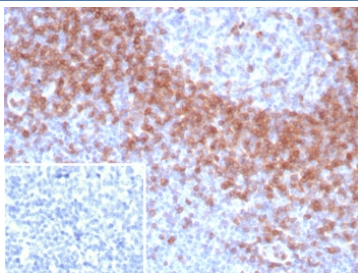
IgD Antibody Recombinant Rabbit MAb IGHD/8367R / Immunoglobulin D Antibody [clone IGHD/8367R] (V4341)

Catalog No.	Formulation	Size
V4341-100UG	0.2 mg/ml in 1X PBS with 0.1 mg/ml BSA (US sourced), 0.05% sodium azide	100 ug
V4341-20UG	0.2 mg/ml in 1X PBS with 0.1 mg/ml BSA (US sourced), 0.05% sodium azide	20 ug
V4341SAF-100UG	1 mg/ml in 1X PBS; BSA free, sodium azide free	100 ug

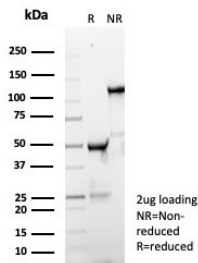
Recombinant **RABBIT MONOCLONAL**

[Bulk quote request](#)

Availability	1-3 business days
Species Reactivity	Human
Format	Purified
Host	Rabbit
Clonality	Recombinant Rabbit Monoclonal
Isotype	Rabbit IgG, kappa
Clone Name	IGHD/8367R
Purity	Protein A/G affinity
UniProt	P01880
Localization	Cytoplasm
Applications	Immunohistochemistry (FFPE) : 1-2ug/ml for 30 minutes at RT
Limitations	This IgD antibody is available for research use only.



IgD Antibody Recombinant Rabbit MAb IGHD/8367R immunohistochemistry analysis of human tonsil tissue. Formalin-fixed paraffin-embedded human tonsil tissue stained with IgD Antibody Recombinant Rabbit MAb IGHD/8367R shows HRP-DAB brown chromogenic staining in B lymphocytes within lymphoid follicles, with strong membranous and cytoplasmic signal in mantle zone B cells surrounding germinal centers. Germinal center lymphocytes display reduced staining compared with mantle zone populations. The inset shows the negative control in which PBS was used in place of the primary antibody, confirming absence of specific staining. Heat induced epitope retrieval was performed by boiling tissue sections in pH 9 10mM Tris with 1mM EDTA for 20 minutes followed by cooling prior to antibody incubation.



SDS-PAGE analysis of purified, BSA-free rabbit monoclonal IgD antibody (clone IGHD/8367R) as confirmation of integrity and purity.

Description

Immunoglobulins are four-chain, Y-shaped, monomeric structures comprised of two identical heavy chains and two identical light chains held together through interchain disulfide bonds. The chains form two domains, the Fab (antigen binding) fragment and the Fc (constant) fragment. Immunoglobulin D (IgD) exists as a monomer with delta heavy chains and either kappa or lambda light chains. It plays a biological role as a transmembrane receptor molecule, co-expressed with IgM on the surface of mature/naive B cells. In particular, it is found on spleen B cell surfaces. Compared to IgM, IgD exists in much lower numbers and is not expressed on immature B cells. IgD surface expression on B cells is regulated in part by IL-27. In mice, the inhibition of this immunoglobulin isotype does not cause a significant change to the immune system.

Application Notes

Optimal dilution of the IgD Antibody Recombinant Rabbit MAbs IGHD/8367R should be determined by the researcher.

Immunogen

A recombinant partial protein sequence (within amino acids 1-200) from the human protein was used as the immunogen for the IgD antibody.

Storage

Aliquot the IgD antibody and store frozen at -20°C or colder. Avoid repeated freeze-thaw cycles.

Alternate Names

Immunoglobulin D antibody, IgD heavy chain antibody, IGHD antibody, Human IgD antibody