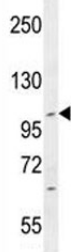


## IFT88 Antibody (F41236)

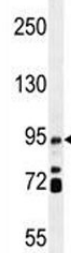
Catalog No.	Formulation	Size
F41236-0.4ML	In 1X PBS, pH 7.4, with 0.09% sodium azide	0.4 ml
F41236-0.08ML	In 1X PBS, pH 7.4, with 0.09% sodium azide	0.08 ml

[Bulk quote request](#)

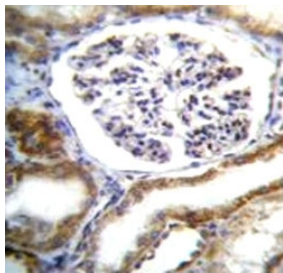
<b>Availability</b>	1-3 business days
<b>Species Reactivity</b>	Human, Mouse
<b>Format</b>	Antigen affinity purified
<b>Host</b>	Rabbit
<b>Clonality</b>	Polyclonal (rabbit origin)
<b>Isotype</b>	Rabbit Ig
<b>Purity</b>	Antigen affinity
<b>UniProt</b>	Q13099
<b>Applications</b>	Western Blot : 1:1000 IHC (Paraffin) : 1:10-1:50 Immunofluorescence : 1:10-1:50
<b>Limitations</b>	This IFT88 antibody is available for research use only.



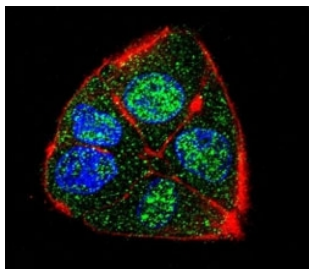
IFT88 antibody western blot analysis in CEM lysate. Predicted molecular weight ~94 kDa.



IFT88 antibody western blot analysis in mouse testis tissue lysate. Predicted molecular weight ~94 kDa.



IFT88 antibody immunohistochemistry analysis in formalin fixed and paraffin embedded human kidney tissue.



Confocal immunofluorescent analysis of IFT88 antibody with HepG2 cells followed by Alexa Fluor 488-conjugated goat anti-rabbit IgG (green). Actin filaments have been labeled with Alexa Fluor 555 Phalloidin (red). DAPI was used as a nuclear counterstain (blue).

## Description

This gene encodes a member of the tetratrico peptide repeat (TPR) family. Mutations of a similar gene in mouse can cause polycystic kidney disease. Two transcript variants encoding distinct isoforms have been identified for this gene. [provided by RefSeq].

## Application Notes

Titration of the IFT88 antibody may be required due to differences in protocols and secondary/substrate sensitivity.

## Immunogen

A portion of amino acids 791-820 from the human protein was used as the immunogen for this IFT88 antibody.

## Storage

Aliquot the IFT88 antibody and store frozen at -20°C or colder. Avoid repeated freeze-thaw cycles.