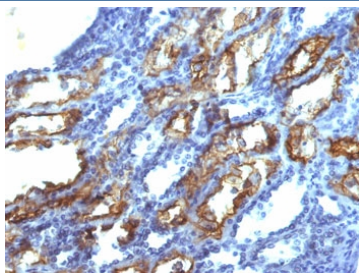


## IFN gamma Antibody [clone IFNG/466] (V3193)

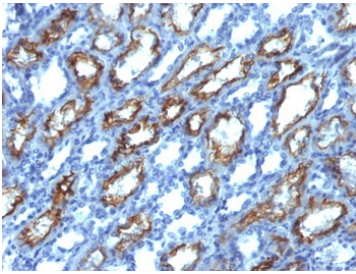
Catalog No.	Formulation	Size
V3193-100UG	0.2 mg/ml in 1X PBS with 0.1 mg/ml BSA (US sourced) and 0.05% sodium azide	100 ug
V3193-20UG	0.2 mg/ml in 1X PBS with 0.1 mg/ml BSA (US sourced) and 0.05% sodium azide	20 ug
V3193SAF-100UG	1 mg/ml in 1X PBS; BSA free, sodium azide free	100 ug

[Bulk quote request](#)

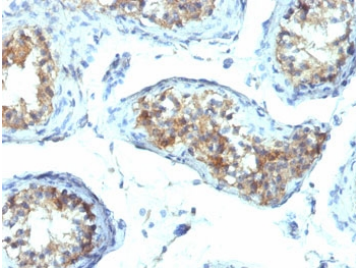
<b>Availability</b>	1-3 business days
<b>Species Reactivity</b>	Human
<b>Format</b>	Purified
<b>Host</b>	Mouse
<b>Clonality</b>	Monoclonal (mouse origin)
<b>Isotype</b>	Mouse IgG2b, kappa
<b>Clone Name</b>	IFNG/466
<b>Purity</b>	Protein G affinity chromatography
<b>UniProt</b>	P01579
<b>Localization</b>	Cytoplasmic, membranous, extracellular (secreted)
<b>Applications</b>	Immunohistochemistry (FFPE) : 1-2ug/ml for 30 min at RT
<b>Limitations</b>	This IFN gamma antibody is available for research use only.



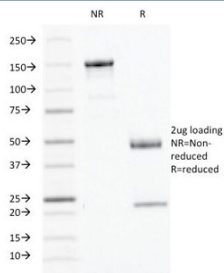
IHC testing of FFPE human renal cell carcinoma with IFN gamma antibody (clone IFNG/466). Required HIER: boil tissue sections in 10mM Tris with 1mM EDTA, pH 9.0, for 10-20 min.



IHC testing of FFPE human renal cell carcinoma with IFN gamma antibody (clone IFNG/466). Required HIER: boil tissue sections in 10mM Tris with 1mM EDTA, pH 9.0, for 10-20 min.



IHC testing of FFPE human testis with IFN gamma antibody (clone IFNG/466). Required HIER: boil tissue sections in 10mM Tris with 1mM EDTA, pH 9.0, for 10-20 min.



SDS-PAGE Analysis of Purified, BSA-Free IFN gamma Antibody (clone IFNG/466). Confirmation of Integrity and Purity of the Antibody.

## Description

Recognizes a protein of 20-25kDa, identified as human interferon. This mAb is specific to human IFN $\gamma$  and recognizes both recombinant and native human IFN $\gamma$ . T lymphocytes and NK cells mainly produce IFN $\gamma$ . It is a pleiotropic cytokine involved in the regulation of nearly all phases of immune and inflammatory responses, including the activation, growth and differentiation of T cell, B cells, macrophages, NK cells and other cell types such as endothelial cells and fibroblasts. It has weak anti-viral and anti-proliferative activity, and potentiates the antiviral and anti-tumor effects of IFN $\alpha$ /b (type I interferon).

## Application Notes

Optimal dilution of the IFN gamma antibody should be determined by the researcher.

## Immunogen

Human recombinant protein was used as the immunogen for the IFN gamma antibody.

## Storage

Store the IFN gamma antibody at 2-8 $^{\circ}$ C (with azide) or aliquot and store at -20 $^{\circ}$ C or colder (without azide).

