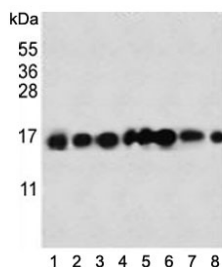


## IFITM3 Antibody / Interferon-inducible protein (F54274)

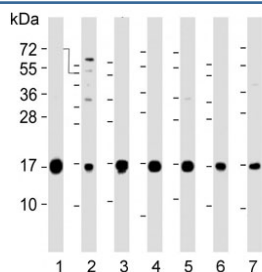
Catalog No.	Formulation	Size
F54274-0.4ML	In 1X PBS, pH 7.4, with 0.09% sodium azide	0.4 ml
F54274-0.08ML	In 1X PBS, pH 7.4, with 0.09% sodium azide	0.08 ml

[Bulk quote request](#)

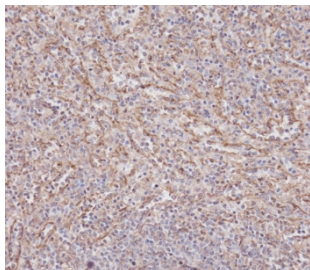
<b>Availability</b>	1-3 business days
<b>Species Reactivity</b>	Human, Mouse
<b>Format</b>	Purified
<b>Host</b>	Rabbit
<b>Clonality</b>	Polyclonal (rabbit origin)
<b>Isotype</b>	Rabbit Ig
<b>Purity</b>	Antigen affinity purified
<b>UniProt</b>	Q01628
<b>Localization</b>	Cytoplasmic
<b>Applications</b>	Western Blot : 1:500-1:2000 Immunohistochemistry (FFPE) : 1:25 Immunofluorescence : 1:25
<b>Limitations</b>	This IFITM3 antibody is available for research use only.



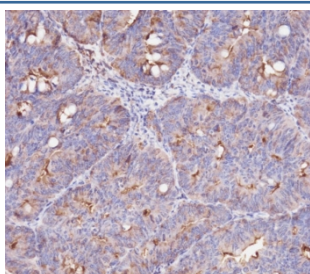
Western blot testing of human 1) HeLa, 2) 293, 3) A549, 4) NCI-H460, 5) HepG2, 6) SK-B-R3 and 7) A375 cell lysate with IFITM3 antibody. Predicted molecular weight: ~15/17 kDa (unmodified/lipidated).



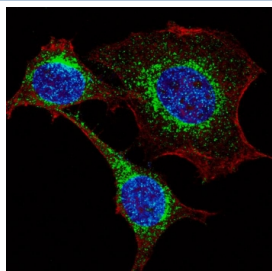
Western blot testing of human 1) HeLa, 2) 293, 3) HepG2, 4) NCI-H460, 5) SK-B-R3, 6) placenta and 7) mouse colon lysate with IFITM3 antibody. Predicted molecular weight: ~15/17 kDa (unmodified/lipidated).



IHC testing of FFPE human spleen tissue with IFITM3 antibody. HIER: steam section in pH6 citrate buffer for 20 min and allow to cool prior to staining.



IHC testing of FFPE human colon carcinoma tissue with IFITM3 antibody. HIER: steam section in pH6 citrate buffer for 20 min and allow to cool prior to staining.



Immunofluorescent staining of fixed and permeabilized human HeLa cells with IFITM3 antibody (green), DAPI nuclear stain (blue) and anti-Actin (red).



Western blot testing of human HT-1080 cell lysate with IFITM3 antibody. Predicted molecular weight: ~15/17 kDa (unmodified/lipidated).

## Description

The family of interferon-induced transmembrane protein (Ifitm/mil/fragilis) cell surface proteins may modulate cell adhesion and influence cell differentiation.

## Application Notes

The stated application concentrations are suggested starting points. Titration of the IFITM3 antibody may be required due to differences in protocols and secondary/substrate sensitivity.

## **Immunogen**

A portion of amino acids 1-30 from the human protein were used as the immunogen for the IFITM3 protein Antibody.

## **Storage**

Aliquot the IFITM3 antibody and store frozen at -20oC or colder. Avoid repeated freeze-thaw cycles.