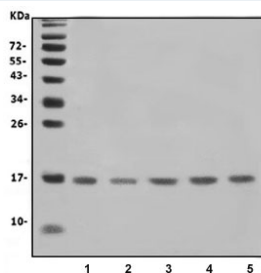


## IFITM1 Antibody (RQ6135)

Catalog No.	Formulation	Size
RQ6135	0.5mg/ml if reconstituted with 0.2ml sterile DI water	100 ug

### Bulk quote request

<b>Availability</b>	1-3 business days
<b>Species Reactivity</b>	Human
<b>Format</b>	Antigen affinity purified
<b>Host</b>	Rabbit
<b>Clonality</b>	Polyclonal (rabbit origin)
<b>Isotype</b>	Rabbit IgG
<b>Purity</b>	Affinity purified
<b>Buffer</b>	Lyophilized from 1X PBS with 2% Trehalose and 0.025% sodium azide
<b>UniProt</b>	P13164
<b>Applications</b>	Western Blot : 1-2ug/ml
<b>Limitations</b>	This IFITM1 antibody is available for research use only.



Western blot testing of human 1) K562, 2) HeLa, 3) HL60, 4) HEK293 and 5) A549 cell lysate with IFITM1 antibody. Predicted molecular weight ~17 kDa.

## Description

Interferon-induced Transmembrane Protein 1 (IFITM1), also called Interferon-induced Protein 17 (IFI17). IFITM1 activity is required for primordial germ cells (PGCs) transit from the mesoderm into the endoderm, and that it appears to act via a repulsive mechanism, such that PGCs avoid Ifitm1-expressing tissues. It is mapped to Chr.11 and belongs to the family of interferon-induced transmembrane proteins (Ifitm/mil/fragilis), which encodes cell surface proteins that may modulate cell adhesion and influence cell differentiation. Interferon-inducible membrane proteins of approximately 17 kDa have been suggested to play a role in the antiproliferative activity of interferons based on their pattern of induction in interferon-sensitive and -resistant cell lines and the ability of a membrane fraction enriched in 17-kDa proteins to inhibit cell growth.

## Application Notes

Optimal dilution of the IFITM1 antibody should be determined by the researcher.

## Immunogen

Amino acids VTVYHIMLQIIQEKRGY from the human protein were used as the immunogen for the IFITM1 antibody.

## Storage

After reconstitution, the IFITM1 antibody can be stored for up to one month at 4°C. For long-term, aliquot and store at -20°C. Avoid repeated freezing and thawing.