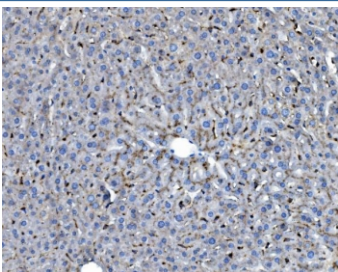


## Ifi30 Antibody / Gilt (RQ6098)

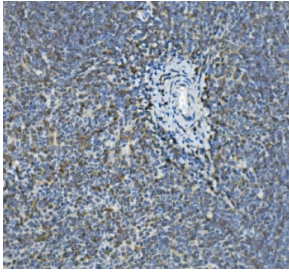
Catalog No.	Formulation	Size
RQ6098	0.5mg/ml if reconstituted with 0.2ml sterile DI water	100 ug

### Bulk quote request

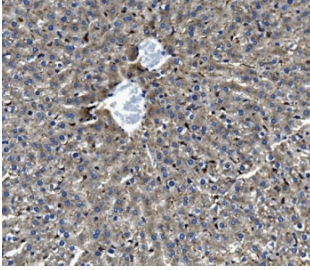
<b>Availability</b>	1-3 business days
<b>Species Reactivity</b>	Mouse, Rat
<b>Format</b>	Antigen affinity purified
<b>Host</b>	Rabbit
<b>Clonality</b>	Polyclonal (rabbit origin)
<b>Isotype</b>	Rabbit IgG
<b>Purity</b>	Affinity purified
<b>Buffer</b>	Lyophilized from 1X PBS with 2% Trehalose and 0.025% sodium azide
<b>UniProt</b>	Q9ESY9
<b>Applications</b>	Western Blot : 1-2ug/ml Immunohistochemistry (FFPE) : 2-5ug/ml Flow Cytometry : 1-3ug/million cells Direct ELISA : 0.1-0.5ug/ml
<b>Limitations</b>	This Ifi30 antibody is available for research use only.



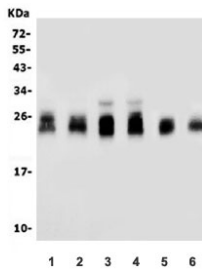
IHC staining of FFPE mouse liver with Ifi30 antibody. HIER: boil tissue sections in pH8 EDTA for 20 min and allow to cool before testing.



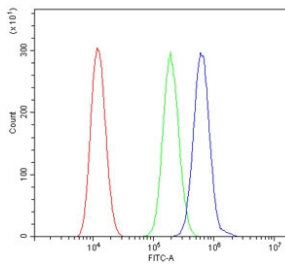
IHC staining of FFPE mouse spleen with Ifi30 antibody. HIER: boil tissue sections in pH8 EDTA for 20 min and allow to cool before testing.



IHC staining of FFPE rat liver with Ifi30 antibody. HIER: boil tissue sections in pH8 EDTA for 20 min and allow to cool before testing.



Western blot testing of mouse 1) spleen, 2) thymus, 3) RAW264.7, 4) mouse ANA-1, 5) rat spleen and 6) rat thymus lysate with Ifi30 antibody. Expected molecular weight: 33-35 kDa (pro form), 25-30 kDa (mature form), 50-60 kDa (homodimer).



Flow cytometry testing of mouse HEPA1-6 cells with Ifi30 antibody at 1ug/million cells (blocked with goat sera); Red=cells alone, Green=isotype control, Blue= Ifi30 antibody.

## Description

Gamma-interferon-inducible lysosomal thiol reductase is an enzyme that, in humans, is encoded by the IFI30 gene. The protein encoded by this gene is a lysosomal thiol reductase that at low pH can reduce protein disulfide bonds. The enzyme is expressed constitutively in antigen-presenting cells and induced by gamma-interferon in other cell types. This enzyme has an important role in MHC class II-restricted antigen processing.

## Application Notes

Optimal dilution of the Ifi30 antibody should be determined by the researcher.

## Immunogen

A mouse recombinant partial protein (amino acids A32-K248) was used as the immunogen for the Ifi30 antibody.

## Storage

After reconstitution, the Ifi30 antibody can be stored for up to one month at 4°C. For long-term, aliquot and store at -20°C. Avoid repeated freezing and thawing.

