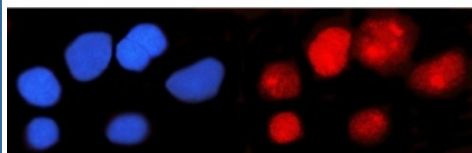


IFI16 Antibody / Gamma-interferon-inducible protein 16 [clone 2I3D7] (RQ7639)

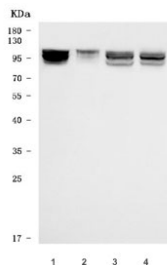
Catalog No.	Formulation	Size
RQ7639	0.5mg/ml if reconstituted with 0.2ml sterile DI water	100 ug

[Bulk quote request](#)

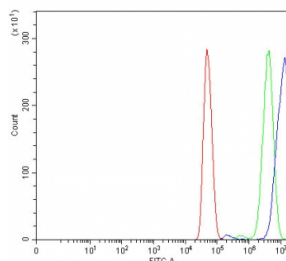
Availability	1-3 business days
Species Reactivity	Human
Format	Antigen affinity purified
Clonality	Monoclonal (mouse origin)
Isotype	Mouse IgG2b
Clone Name	2I3D7
Purity	Antigen affinity purified
Buffer	Lyophilized from 1X PBS with 2% Trehalose
UniProt	Q16666
Localization	Nuclear, cytoplasmic
Applications	Western Blot : 0.5-1ug/ml Immunofluorescence : 5ug/ml Flow Cytometry : 1-3ug/million cells
Limitations	This IFI16 antibody is available for research use only.



Immunofluorescent staining of FFPE human U-251 cells with IFI16 antibody (red) and DAPI nuclear stain (blue). HIER: steam section in pH6 citrate buffer for 20 min.



Western blot testing of human 1) Daudi, 2) Raji, 3) MOLT4 and 4) U-87 MG cell lysate with IFI16 antibody. Expected molecular weight: 85-95 kDa (three isoforms).



Flow cytometry testing of human U-251 cells with IFI16 antibody at 1ug/million cells (blocked with goat sera); Red=cells alone, Green=isotype control, Blue= IFI16 antibody.

Description

Gamma-interferon-inducible protein Ifi-16 (Ifi-16) also known as interferon-inducible myeloid differentiation transcriptional activator is a protein that in humans is encoded by the IFI16 gene. This gene encodes a member of the HIN-200 (hematopoietic interferon-inducible nuclear antigens with 200 amino acid repeats) family of cytokines. The encoded protein contains domains involved in DNA binding, transcriptional regulation, and protein-protein interactions. The protein localizes to the nucleoplasm and nucleoli, and interacts with p53 and retinoblastoma-1. It modulates p53 function, and inhibits cell growth in the Ras/Raf signaling pathway. Alternatively spliced transcript variants encoding different isoforms have been found for this gene.

Application Notes

Optimal dilution of the IFI16 antibody should be determined by the researcher.

Immunogen

E. coli-derived recombinant human protein (amino acids E183-K743) was used as the immunogen for the IFI16 antibody.

Storage

After reconstitution, the IFI16 antibody can be stored for up to one month at 4oC. For long-term, aliquot and store at -20oC. Avoid repeated freezing and thawing.