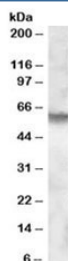


IDS Antibody (R34459)

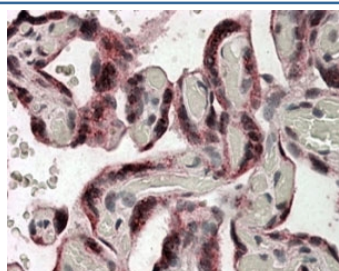
Catalog No.	Formulation	Size
R34459-100UG	0.5 mg/ml in 1X TBS, pH7.3, with 0.5% BSA (US sourced) and 0.02% sodium azide	100 ug

[Bulk quote request](#)

Availability	1-3 business days
Species Reactivity	Human
Format	Antigen affinity purified
Host	Goat
Clonality	Polyclonal (goat origin)
Isotype	Goat Ig
Purity	Antigen affinity
Gene ID	3423
Applications	Western Blot : 0.1-0.3ug/ml Immunohistochemistry (FFPE) : 3-6ug/ml ELISA (peptide) LOD : 1:16000
Limitations	This IDS antibody is available for research use only.



Western blot testing of human liver lysate with IDS antibody at 0.1ug/ml. Predicted molecular weight: ~62kDa.



IHC staining of FFPE human placenta with IDS antibody at 4ug/ml. HIER: steamed with pH6 citrate buffer, AP-staining.

Description

Additional name(s) for this target protein: Iduronate 2-sulfatase

Application Notes

Optimal dilution of the IDS antibody should be determined by the researcher.

1. This IDS antibody is specific for isoform a.

Immunogen

Amino acids KHFRFRDLEEDP were used as the immunogen for this IDS antibody.

Storage

Aliquot and store the IDS antibody at -20oC.