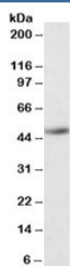


IDO2 Antibody (R35561)

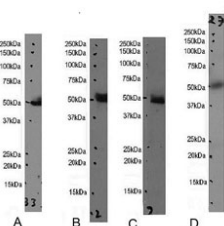
Catalog No.	Formulation	Size
R35561-100UG	0.5 mg/ml in 1X TBS, pH7.3, with 0.5% BSA (US sourced) and 0.02% sodium azide	100 ug

[Bulk quote request](#)

Availability	1-3 business days
Species Reactivity	Human
Format	Antigen affinity purified
Host	Goat
Clonality	Polyclonal (goat origin)
Isotype	Goat Ig
Purity	Antigen affinity
Gene ID	169355
Applications	Western Blot : 1-3ug/ml ELISA (peptide) LOD : 1:64000
Limitations	This IDO2 antibody is available for research use only.



IDO2 Antibody Human Kidney WB. Western blot testing of human kidney lysate with IDO2 antibody. Expected molecular weight: ~47 kDa.



IDO2 Antibody Human Tissue WB. Western blot testing of human A) kidney, B) placenta, C) tonsil and D) liver tissue lysate with IDO2 antibody. Expected molecular weight: ~47 kDa.

Description

Additional name(s) for this target protein: Indoleamine 2,3-dioxygenase 2; INDOL1

This antibody can be compared with our [IDO2 Antibody \(clone IDO2/2640\)](#) for consistent detection of IDO2 across tryptophan metabolism and immune regulatory studies.

Application Notes

Optimal dilution of the IDO2 antibody should be determined by the researcher.

Immunogen

Amino acids RDKTLESILHPR were used as the immunogen for this IDO2 antibody.

Storage

Aliquot and store the IDO2 antibody at -20oC.