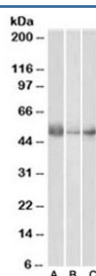


## IDO Antibody (R33363)

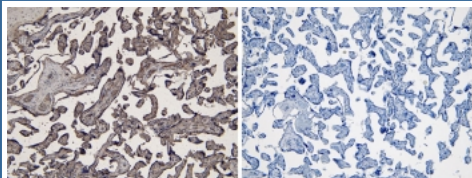
Catalog No.	Formulation	Size
R33363-100UG	0.5 mg/ml in 1X TBS, pH7.3, with 0.5% BSA (US sourced) and 0.02% sodium azide	100 ug

[Bulk quote request](#)

Availability	1-3 business days
Species Reactivity	Human
Predicted Reactivity	Mouse, Rat
Format	Antigen affinity purified
Host	Goat
Clonality	Polyclonal (goat origin)
Isotype	Goat Ig
Purity	Antigen affinity
Gene ID	3620
Localization	Cytoplasmic
Applications	Western Blot : 0.5-2ug/ml Immunohistochemistry (FFPE) : 6-10ug/ml ELISA (peptide) LOD : 1:8000
Limitations	This IDO antibody is available for research use only.



Western blot testing of human lymph node (A), spleen (B) and placenta (C) lysates with IDO antibody at 0.5ug/ml. Predicted molecular weight ~46 kDa.



IHC testing of FFPE human placenta tissue with (left) and without (right) IDO antibody at 6ug/ml. HIER: steamed with pH6 citrate buffer.

## Description

Additional name(s) for this target protein: Indole 2,3-dioxygenase; IDO1

## Application Notes

Optimal dilution of the IDO antibody should be determined by the researcher.

## Immunogen

Amino acids CVLANWKKKDPNK were used as the immunogen for this IDO antibody.

## Storage

Aliquot and store the IDO antibody at -20oC.