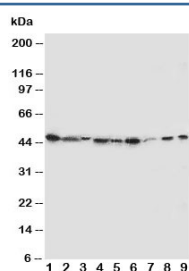


## IDO Antibody Indoleamine 2, 3-dioxygenase (R30691)

Catalog No.	Formulation	Size
R30691	0.5mg/ml if reconstituted with 0.2ml sterile DI water	100 ug

**Bulk quote request**

<b>Availability</b>	1-3 business days
<b>Species Reactivity</b>	Human
<b>Format</b>	Antigen affinity purified
<b>Clonality</b>	Polyclonal (rabbit origin)
<b>Isotype</b>	Rabbit IgG
<b>Purity</b>	Antigen affinity
<b>Buffer</b>	Lyophilized from 1X PBS with 2.5% BSA and 0.025% sodium azide/thimerosal
<b>UniProt</b>	P14902
<b>Applications</b>	Western Blot : 0.5-1ug/ml
<b>Limitations</b>	This IDO antibody is available for research use only.



Western blot testing of IDO antibody and Lane 1: SMMC-7721; 2: A549; 3: human placenta; 4: SW620; 5: U87; 6: 293T; 7: A431; 8: HeLa; 9: COLO320 cell lysate. Predicted/observed molecular weight ~45kDa.

## Description

Indoleamine 2,3-dioxygenase, also called INDO or IDO, is an immunomodulatory enzyme produced by some alternatively activated macrophages and other immunoregulatory cells. This enzyme catalyzes the degradation of the essential amino acid L-tryptophan to N-formyl-kynurenine. By fluorescence in situ hybridization, the assignment is narrowed to chromosome 8p12-p11. IDO-Interferon-gamma interaction has an antiproliferative effect on many tumor cells and inhibits intracellular pathogens such as Toxoplasma and chlamydia, at least partly because of the induction of indoleamine 2,3-dioxygenase. During inflammation, IDO is upregulated in dendritic cells and phagocytes by proinflammatory stimuli, most notably IFNG, and the enzyme then uses superoxide as a 'cofactor' for oxidative cleavage of the indole ring of tryptophan, yielding an intermediate that deformylates to L-kynurenine.

## Application Notes

The stated application concentrations are suggested starting amounts. Titration of the IDO antibody may be required due to differences in protocols and secondary/substrate sensitivity.

## Immunogen

An amino acid sequence from the N-terminus of human Indoleamine 2, 3-dioxygenase (MAHAMENSWTISKEYHIDEE) was used as the immunogen for this IDO antibody.

## Storage

After reconstitution, the IDO antibody can be stored for up to one month at 4°C. For long-term, aliquot and store at -20°C. Avoid repeated freezing and thawing.