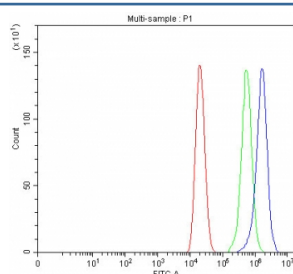


IDI2 Antibody / Isopentenyl-diphosphate delta-isomerase 2 (RQ8604)

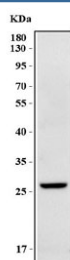
Catalog No.	Formulation	Size
RQ8604	0.5mg/ml if reconstituted with 0.2ml sterile DI water	100 ug

Bulk quote request

Availability	1-3 days
Species Reactivity	Human
Format	Antigen affinity purified
Clonality	Polyclonal (rabbit origin)
Isotype	Rabbit IgG
Purity	Antigen affinity purified
Buffer	Lyophilized from 1X PBS with 2% Trehalose
UniProt	Q9BXS1
Applications	Western Blot : 0.5-1ug/ml Flow Cytometry : 1-3ug/million cells ELISA : 0.1-0.5ug/ml
Limitations	This IDI2 antibody is available for research use only.



Flow cytometry testing of fixed and permeabilized human Caco-2 cells with IDI2 antibody at 1ug/million cells (blocked with goat sera); Red=cells alone, Green=isotype control, Blue= IDI2 antibody.



Western blot testing of human Caco-2 cell lysate with IDI2 antibody. Predicted molecular weight ~27 kDa.

Description

The protein encoded by this gene catalyzes the conversion of isopentenyl diphosphate to dimethylallyl diphosphate, which is a precursor for the synthesis of cholesterol and other isoprenoids. This gene, which is a product of an ancestral gene duplication event, encodes a protein that may be involved in the aggregation of alpha-synuclein in the cerebral cortex of patients with Lewy body disease. In addition, segmental copy number gains in this locus have been associated with sporadic amyotrophic lateral sclerosis.

Application Notes

Optimal dilution of the IDI2 antibody should be determined by the researcher.

Immunogen

An E.coli-derived human recombinant protein (amino acids M1-V227) was used as the immunogen for the IDI2 antibody.

Storage

After reconstitution, the IDI2 antibody can be stored for up to one month at 4oC. For long-term, aliquot and store at -20oC. Avoid repeated freezing and thawing.