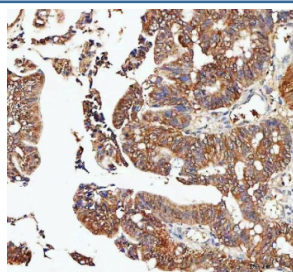


IDI1 Antibody / Isopentenyl-diphosphate Delta-isomerase 1 (RQ8537)

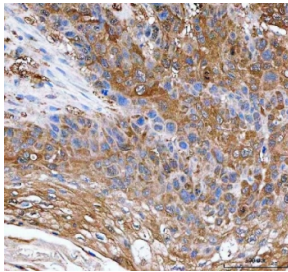
Catalog No.	Formulation	Size
RQ8537	0.5mg/ml if reconstituted with 0.2ml sterile DI water	100 ug

Bulk quote request

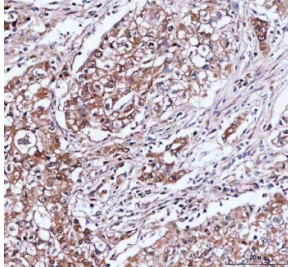
Availability	1-3 days
Species Reactivity	Human, Mouse, Rat
Format	Antigen affinity purified
Clonality	Polyclonal (rabbit origin)
Isotype	Rabbit IgG
Purity	Antigen affinity purified
Buffer	Lyophilized from 1X PBS with 2% Trehalose
UniProt	Q13907
Localization	Cytoplasm
Applications	Western Blot : 0.5-1ug/ml Immunohistochemistry (FFPE) : 2-5ug/ml Flow Cytometry : 1-3ug/million cells ELISA : 0.1-0.5ug/ml
Limitations	This IDI1 antibody is available for research use only.



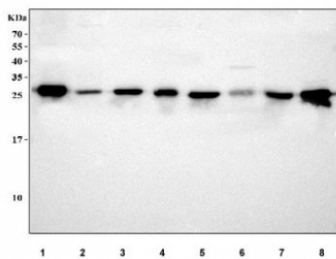
IHC staining of FFPE human rectum adenocarcinoma tissue with IDI1 antibody. HIER: boil tissue sections in pH8 EDTA for 20 min and allow to cool before testing.



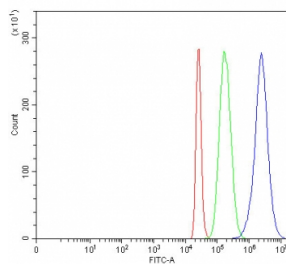
IHC staining of FFPE human esophageal squamous carcinoma tissue with IDI1 antibody. HIER: boil tissue sections in pH8 EDTA for 20 min and allow to cool before testing.



IHC staining of FFPE human lung cancer tissue with IDI1 antibody. HIER: boil tissue sections in pH8 EDTA for 20 min and allow to cool before testing.



Western blot testing of 1) human Caco-2, 2) human A431, 3) human 293T, 4) human MCF7, 5) rat liver, 6) rat RH35, 7) mouse liver and 8) mouse NIH 3T3 cell lysate with IDI1 antibody. Predicted molecular weight ~26 kDa.



Flow cytometry testing of fixed and permeabilized human 293T cells with IDI1 antibody at 1ug/million cells (blocked with goat sera); Red=cells alone, Green=isotype control, Blue= IDI1 antibody.

Description

IDI1 encodes a peroxisomally-localized enzyme that catalyzes the interconversion of isopentenyl diphosphate (IPP) to its highly electrophilic isomer, dimethylallyl diphosphate (DMAPP), which are the substrates for the successive reaction that results in the synthesis of farnesyl diphosphate and, ultimately, cholesterol. It has been shown in peroxisomal deficiency diseases such as Zellweger syndrome and neonatal adrenoleukodystrophy that there is reduction in IPP isomerase activity.

Application Notes

Optimal dilution of the IDI1 antibody should be determined by the researcher.

Immunogen

An E.coli-derived human recombinant protein (amino acids M1-M227) was used as the immunogen for the IDI1 antibody.

Storage

After reconstitution, the IDI1 antibody can be stored for up to one month at 4°C. For long-term, aliquot and store at -20°C. Avoid repeated freezing and thawing.

