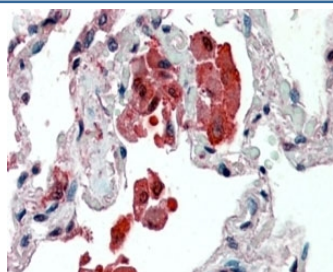


## IDE Antibody (R35417)

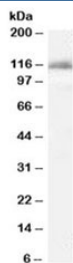
Catalog No.	Formulation	Size
R35417-100UG	0.5 mg/ml in 1X TBS, pH7.3, with 0.5% BSA (US sourced) and 0.02% sodium azide	100 ug

[Bulk quote request](#)

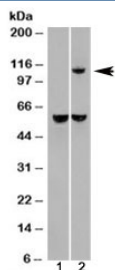
Availability	1-3 business days
Species Reactivity	Human
Predicted Reactivity	Dog
Format	Antigen affinity purified
Host	Goat
Clonality	Polyclonal (goat origin)
Isotype	Goat Ig
Purity	Antigen affinity
Gene ID	3416
Applications	Western Blot : 0.1-0.3ug/ml Immunohistochemistry (FFPE) : 3-6ug/ml ELISA (peptide) LOD : 1:32000
Limitations	This IDE antibody is available for research use only.



IHC staining of FFPE human lung with IDE antibody at 2.5ug/ml. HIER: steamed with pH6 citrate buffer, AP-staining.



Western blot testing of K562 cell lysate with IDE antibody at 0.1ug/ml. Predicted molecular weight: ~118kDa.



Western blot of HEK293 lysate overexpressing IDE probed with IDE antibody (mock transfection in lane 1). Predicted molecular weight: ~118kDa.

## Description

Additional name(s) for this target protein: Insulin-degrading enzyme, Insulysin, Insulinase

## Application Notes

Optimal dilution of the IDE antibody should be determined by the researcher.

## Immunogen

Amino acids QQYNFDRDNTE were used as the immunogen for this IDE antibody.

## Storage

Aliquot and store the IDE antibody at -20oC.