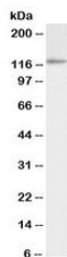


## IDE Antibody Biotin Conjugate (R35417BTN)

Catalog No.	Formulation	Size
R35417BTN	0.5 mg/ml in 1X TBS, pH7.3, with 0.5% BSA (US sourced) and 0.02% sodium azide	100 ug

[Bulk quote request](#)

Availability	1-3 business days
Species Reactivity	Human
Predicted Reactivity	Dog
Format	Biotin Conjugate
Clonality	Polyclonal (goat origin)
Isotype	Goat Ig
Purity	Antigen affinity
Gene ID	3416
Applications	Western Blot : 0.3-1ug/ml Immunohistochemistry (FFPE) : suitable ELISA (peptide) LOD : 1:32000
Limitations	This IDE antibody is available for research use only.



Western blot testing of K562 cell lysate with biotinylated IDE antibody at 0.3ug/ml.  
Predicted molecular weight: ~118kDa.

## Description

Additional name(s) for this target protein: Insulin-degrading enzyme, Insulysin, Insulinase

## Application Notes

Optimal dilution of the IDE antibody should be determined by the researcher.

## **Immunogen**

Amino acids QQYNFDRDNTTE were used as the immunogen for this IDE antibody.

## **Storage**

Aliquot and store the IDE antibody at -20oC.