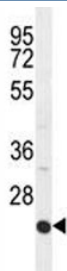


ICAM2 Antibody (F41146)

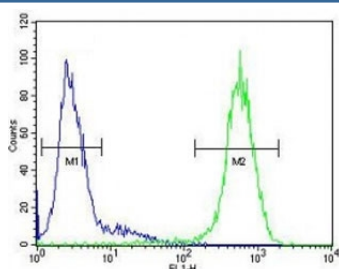
Catalog No.	Formulation	Size
F41146-0.4ML	In 1X PBS, pH 7.4, with 0.09% sodium azide	0.4 ml
F41146-0.08ML	In 1X PBS, pH 7.4, with 0.09% sodium azide	0.08 ml

Bulk quote request

Availability	1-3 business days
Species Reactivity	Human
Format	Antigen affinity purified
Clonality	Polyclonal (rabbit origin)
Isotype	Rabbit Ig
Purity	Antigen affinity
UniProt	P13598
Applications	Western Blot : 1:1000 Flow Cytometry : 1:10-1:50
Limitations	This ICAM2 antibody is available for research use only.



ICAM2 antibody western blot analysis in HepG2 lysate. Expected molecular weight: 31-60 kDa depending on glycosylation level.



ICAM2 antibody flow cytometric analysis of HepG2 cells (right histogram) compared to a negative control (left histogram). FITC-conjugated goat-anti-rabbit secondary Ab was used for the analysis.

Description

The protein encoded by this gene is a member of the intercellular adhesion molecule (ICAM) family. All ICAM proteins are type I transmembrane glycoproteins, contain 2-9 immunoglobulin-like C2-type domains, and bind to the leukocyte adhesion LFA-1 protein. This protein may play a role in lymphocyte recirculation by blocking LFA-1-dependent cell adhesion. It mediates adhesive interactions important for antigen-specific immune response, NK-cell mediated clearance, lymphocyte recirculation, and other cellular interactions important for immune response and surveillance. Several transcript variants encoding the same protein have been found for this gene.

Application Notes

Titration of the ICAM2 antibody may be required due to differences in protocols and secondary/substrate sensitivity.

Immunogen

A portion of amino acids 191-218 from the human protein was used as the immunogen for this ICAM2 antibody.

Storage

Aliquot the ICAM2 antibody and store frozen at -20oC or colder. Avoid repeated freeze-thaw cycles.