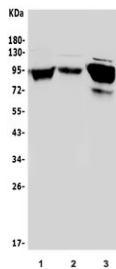


ICAM1 Antibody / CD54 (RQ4001)

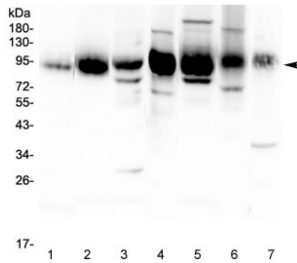
Catalog No.	Formulation	Size
RQ4001	0.5mg/ml if reconstituted with 0.2ml sterile DI water	100 ug

Bulk quote request

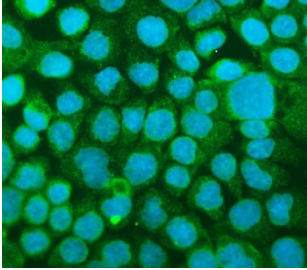
Availability	1-3 business days
Species Reactivity	Human, Mouse, Rat
Format	Antigen affinity purified
Host	Rabbit
Clonality	Polyclonal (rabbit origin)
Isotype	Rabbit IgG
Purity	Antigen affinity purified
Buffer	Lyophilized from 1X PBS with 2% Trehalose and 0.025% sodium azide
UniProt	P05362
Applications	Western Blot : 0.5-1ug/ml Immunohistochemistry (FFPE) : 1-2ug/ml Immunofluorescence (FFPE) : 2-4ug/ml Flow Cytometry : 1-3ug/million cells Direct ELISA : 0.1-0.5ug/ml
Limitations	This ICAM1 antibody is available for research use only.



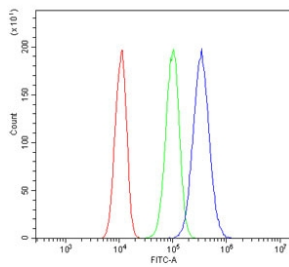
Western blot testing of human 1) Raji, 2) K562 and 3) HepG2 cell lysate with ICAM1 antibody at 0.5ug/ml. Predicted molecular weight: ~58 kDa (unmodified), 75-115 kDa (glycosylated).



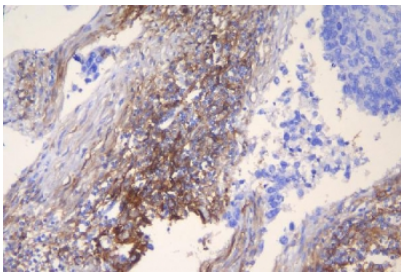
Western blot testing of rat 1) spleen, 2) thymus and 3) RH35 lysate and mouse 4) spleen, 5) thymus, 6) HEPA1-6 and 7) heart lysate with ICAM1 antibody at 0.5ug/ml. Predicted molecular weight: ~58 kDa (unmodified), 75-115 kDa (glycosylated).



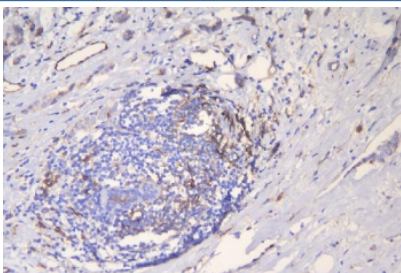
Immunofluorescent staining of FFPE human A431 cells with ICAM1 antibody (green) and DAPI nuclear stain (blue). HIER: steam section in pH6 citrate buffer for 20 min.



Flow cytometry testing of human PC-3 cells with ICAM1 antibody at 1ug/million cells (blocked with goat sera); Red=cells alone, Green=isotype control, Blue= ICAM1 antibody.



IHC staining of FFPE human lung cancer with ICAM1 antibody. HIER: boil tissue sections in pH8 EDTA for 20 min and allow to cool before testing.



IHC staining of FFPE human breast cancer with ICAM1 antibody. HIER: boil tissue sections in pH8 EDTA for 20 min and allow to cool before testing.

Description

CD54, also known as Intercellular adhesion molecule-1 (ICAM1) is a ligand for lymphocyte function-associated (LFA) antigens. ICAM-1 is an integral membrane protein, a member of the immunoglobulin superfamily, and a ligand for LFA-1, a beta 2 leukocyte integrin. This protein is the major human rhinovirus receptor. The ICAM1 gene is mapped to human chromosome 19. In humans, lymphocyte adhesion to cells is mediated by the protein heterodimer CD11a/CD18 (Leu-CAMa, LFA-1) and its ligand CD54 (ICAM-1).

Application Notes

Optimal dilution of the ICAM1 antibody should be determined by the researcher.

Immunogen

A recombinant human partial protein corresponding to amino acids Q28-R268 was used as the immunogen for the ICAM1 antibody.

Storage

After reconstitution, the ICAM1 antibody can be stored for up to one month at 4°C. For long-term, aliquot and store at -20°C. Avoid repeated freezing and thawing.