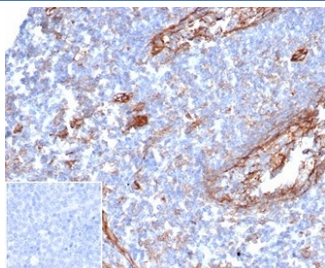


ICAM1 Antibody / CD54 [clone ICAM1/6319] (V9197)

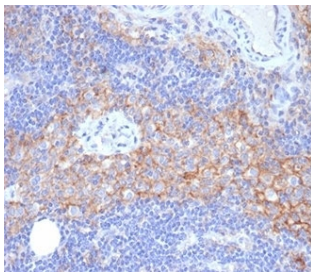
Catalog No.	Formulation	Size
V9197-100UG	0.2 mg/ml in 1X PBS with 0.1 mg/ml BSA (US sourced), 0.05% sodium azide	100 ug
V9197-20UG	0.2 mg/ml in 1X PBS with 0.1 mg/ml BSA (US sourced), 0.05% sodium azide	20 ug
V9197SAF-100UG	1 mg/ml in 1X PBS; BSA free, sodium azide free	100 ug

[Bulk quote request](#)

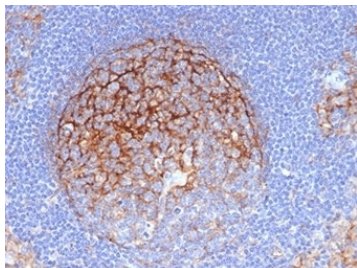
Availability	1-3 business days
Species Reactivity	Human
Format	Purified
Host	Mouse
Clonality	Monoclonal (mouse origin)
Isotype	Mouse IgG1
Clone Name	ICAM1/6319
Purity	Protein A/G affinity
UniProt	P05362
Localization	Cell Surface
Applications	Flow Cytometry : 1-2ug/million cells Immunofluorescence : 1-2ug/ml Immunohistochemistry (FFPE) : 1-2ug/ml
Limitations	This ICAM1 antibody is available for research use only.



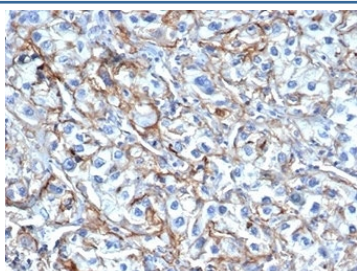
IHC staining of FFPE human tonsil tissue with ICAM1 antibody (clone ICAM1/6319) at 2ug/ml. Negative control inset: PBS instead of primary antibody to control for secondary binding. HIER: boil tissue sections in pH 9 10mM Tris with 1mM EDTA for 20 min and allow to cool before testing.



IHC staining of FFPE human lymph node tissue with ICAM1 antibody (clone ICAM1/6319). HIER: boil tissue sections in pH 9 10mM Tris with 1mM EDTA for 20 min and allow to cool before testing.



IHC staining of FFPE human lymph node tissue with ICAM1 antibody (clone ICAM1/6319). HIER: boil tissue sections in pH 9 10mM Tris with 1mM EDTA for 20 min and allow to cool before testing.



IHC staining of FFPE human renal cell carcinoma tissue with ICAM-1 antibody (clone ICAM1/6319). HIER: boil tissue sections in pH 9 10mM Tris with 1mM EDTA for 20 min and allow to cool before testing.

Description

ICAM-1 is a single chain glycoprotein of Ig supergene family, present on unstimulated endothelial cells (EC) and on a variety of other cell types including activated fibroblasts, EC, macrophages, and lymphocytes.

Application Notes

Optimal dilution of the ICAM1 antibody should be determined by the researcher.

Immunogen

Recombinant full-length human ICAM1 protein was used as the immunogen for the ICAM1 antibody. The epitope is known to be in the extracellular domain.

Storage

Aliquot the ICAM1 antibody and store frozen at -20oC or colder. Avoid repeated freeze-thaw cycles.