

ICAM1 Antibody / CD54 [clone F4-31C2] (V2605)

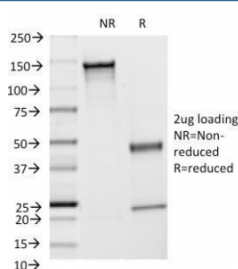
Catalog No.	Formulation	Size
V2605-100UG	0.2 mg/ml in 1X PBS with 0.1 mg/ml BSA (US sourced) and 0.05% sodium azide	100 ug
V2605-20UG	0.2 mg/ml in 1X PBS with 0.1 mg/ml BSA (US sourced) and 0.05% sodium azide	20 ug
V2605SAF-100UG	1 mg/ml in 1X PBS; BSA free, sodium azide free	100 ug



Citations (1)

[Bulk quote request](#)

Availability	1-3 business days
Species Reactivity	Human
Format	Purified
Clonality	Monoclonal (mouse origin)
Isotype	Mouse IgG2a, kappa
Clone Name	F4-31C2
Purity	Protein G affinity chromatography
UniProt	P05362
Localization	Cell surface
Applications	Functional Studies (order BSA/sodium Azide-free Format) : Flow Cytometry : 0.5-1ug/10 ⁶ cells Immunofluorescence : 0.5-1ug/ml
Limitations	This ICAM1 antibody is available for research use only.



SDS-PAGE Analysis of Purified, BSA-Free ICAM1 Antibody (clone F4-31C2).
Confirmation of Integrity and Purity of the Antibody.

Description

Recognizes an 85-115kDa protein (variation with cell type), identified as intercellular adhesion molecule (ICAM-1). It has 7 potential N-linked glycosylation sites. ICAM1 is a single chain glycoprotein of Ig supergene family, present on unstimulated endothelial cells (EC) and on a variety of other cell types including activated fibroblasts, EC, macrophages, and lymphocytes. ICAM1 mediates cell adhesion by binding to integrins CD11a/CD18 (leukocyte adhesion molecule, LFA-1) and to CD11b/CD18 (Mac-1). This interaction enhances antigen-specific T-cell activation. ICAM1 also binds to CD43 and to Plasmodium falciparum infected RBCs and may also be related to progression and metastasis of tumors.

Application Notes

Optimal dilution of the ICAM1 antibody should be determined by the researcher.

Immunogen

Human umbilical cord vein endothelial cells (HUVEC) were used as the immunogen for the ICAM1 antibody.

Storage

Store the ICAM1 antibody at 2-8oC (with azide) or aliquot and store at -20oC or colder (without azide).