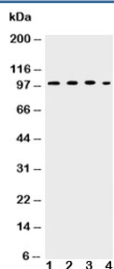


## ICAM-1 Antibody / CD54 (R31450)

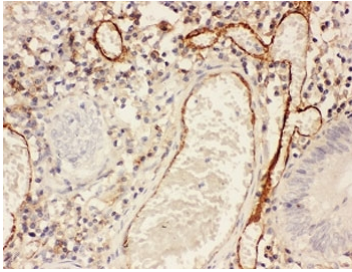
Catalog No.	Formulation	Size
R31450	0.5mg/ml if reconstituted with 0.2ml sterile DI water	100 ug

**Bulk quote request**

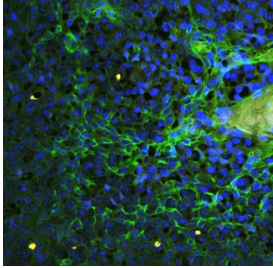
<b>Availability</b>	1-3 business days
<b>Species Reactivity</b>	Human
<b>Format</b>	Antigen affinity purified
<b>Host</b>	Rabbit
<b>Clonality</b>	Polyclonal (rabbit origin)
<b>Isotype</b>	Rabbit IgG
<b>Purity</b>	Antigen affinity
<b>Buffer</b>	Lyophilized from 1X PBS with 2.5% BSA and 0.025% sodium azide
<b>Gene ID</b>	3383
<b>Applications</b>	Western Blot : 0.5-1ug/ml Immunohistochemistry (FFPE) : 0.5-1ug/ml Immunofluorescence : 1-2ug/ml Flow Cytometry : 1-3ug/10 <sup>6</sup> cells
<b>Limitations</b>	This ICAM-1 antibody is available for research use only.



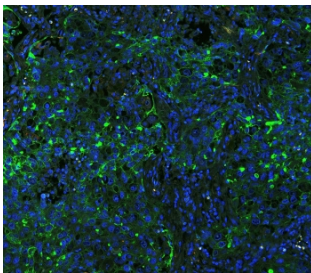
Western blot testing of ICAM-1 antibody and Lane 1: HEPG2; 2: K562; 3: A549; 4: HT1080 lysate. Predicted molecular weight: ~58/75-115 kDa (unmodified/glycosylated).



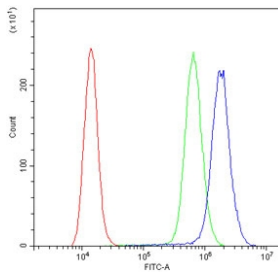
IHC staining of FFPE human intestinal cancer with ICAM-1 antibody at 1ug/ml. HIER: boil tissue sections in pH6, 10mM citrate buffer, for 10-20 min and allow to cool before testing.



Immunofluorescent staining of FFPE human tonsil tissue with ICAM-1 antibody (green) at 1ug/ml and DAPI nuclear counterstain (blue). HIER: boil tissue sections in pH6, 10mM citrate buffer, for 10-20 min and allow to cool before testing.



Immunofluorescent staining of FFPE human lung cancer with ICAM-1 antibody (green) at 1ug/ml and DAPI nuclear counterstain (blue). HIER: boil tissue sections in pH6, 10mM citrate buffer, for 10-20 min and allow to cool before testing.



Flow cytometry testing of human A431 cells with ICAM-1 antibody at 1ug/10<sup>6</sup> cells (blocked with goat sera); Red=cells alone, Green=isotype control, Blue= ICAM-1 antibody.

## Description

Intercellular adhesion molecule-1 is a ligand for LFA-1, a beta 2 leukocyte integrin. In humans, lymphocyte adhesion to cells is mediated by the protein heterodimer Leu-CAMa/LFA-1 and its ligand ICAM-1.

## Application Notes

The stated application concentrations are suggested starting points. Titration of the ICAM-1 antibody may be required due to differences in protocols and secondary/substrate sensitivity.

## Immunogen

Human partial recombinant protein (AA 214-532) was used as the immunogen for this ICAM-1 antibody.

## Storage

After reconstitution, the ICAM-1 antibody can be stored for up to one month at 4oC. For long-term, aliquot and store at -20oC. Avoid repeated freezing and thawing.

