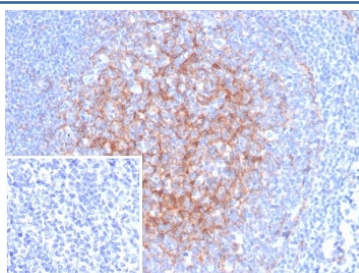


## ICAM-1 Antibody / CD54 [clone ICAM1/6968] (V4615)

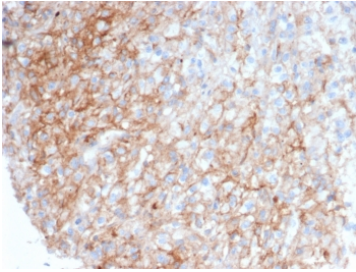
Catalog No.	Formulation	Size
V4615-100UG	0.2 mg/ml in 1X PBS with 0.1 mg/ml BSA (US sourced), 0.05% sodium azide	100 ug
V4615-20UG	0.2 mg/ml in 1X PBS with 0.1 mg/ml BSA (US sourced), 0.05% sodium azide	20 ug
V4615SAF-100UG	1 mg/ml in 1X PBS; BSA free, sodium azide free	100 ug

[Bulk quote request](#)

<b>Availability</b>	1-3 business days
<b>Species Reactivity</b>	Human
<b>Format</b>	Purified
<b>Host</b>	Mouse
<b>Clonality</b>	Monoclonal (mouse origin)
<b>Isotype</b>	Mouse IgG2a, kappa
<b>Clone Name</b>	ICAM1/6968
<b>Purity</b>	Protein A/G affinity
<b>UniProt</b>	P05362
<b>Localization</b>	Cell Surface
<b>Applications</b>	Immunohistochemistry (FFPE) : 1-2ug/ml for 30 min at RT
<b>Limitations</b>	This ICAM-1 antibody is available for research use only.



IHC staining of FFPE human tonsil tissue with ICAM-1 antibody (clone ICAM1/6968). Inset: PBS used in place of primary Ab (secondary Ab negative control). HIER: boil tissue sections in pH 9 10mM Tris with 1mM EDTA for 20 min and allow to cool before testing.



IHC staining of FFPE human tonsil tissue with ICAM-1 antibody (clone ICAM1/6968).  
HIER: boil tissue sections in pH 9 10mM Tris with 1mM EDTA for 20 min and allow to cool before testing.

## Description

ICAM-1/CD54 is a single chain glycoprotein of Ig supergene family, present on unstimulated endothelial cells (EC) and on a variety of other cell types including activated fibroblasts, EC, macrophages, and lymphocytes.

## Application Notes

Optimal dilution of the ICAM-1 antibody should be determined by the researcher.

## Immunogen

A recombinant fragment of the human protein was used as the immunogen for the ICAM-1 antibody.

## Storage

Aliquot the ICAM-1 antibody and store frozen at -20oC or colder. Avoid repeated freeze-thaw cycles.