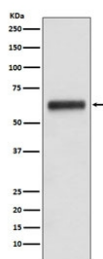


## Human IgG3 Antibody / IGHG3 [clone ACIA-9] (RQ4981)

Catalog No.	Formulation	Size
RQ4981	Antibody in PBS with 0.02% sodium azide, 50% glycerol and 0.4-0.5mg/ml BSA	100 ul

[Bulk quote request](#)

Availability	1-2 weeks
Species Reactivity	Human
Format	Purified
Clonality	Rabbit Monoclonal
Isotype	Rabbit IgG
Clone Name	ACIA-9
Purity	Affinity purified
UniProt	P01860
Applications	Western Blot : 1:500-1:2000
Limitations	This Human IgG3 antibody is available for research use only.



Western blot testing of human plasma lysate with Human IgG3 antibody. Predicted molecular weight ~50 kDa.

### Description

IgG is a monomeric immunoglobulin, built of two heavy chains gamma and two light chains. Each molecule has two antigen binding sites. This is the most abundant immunoglobulin and is approximately equally distributed in blood and in tissue liquids, constituting 75% of serum immunoglobulins in humans. There are 4 subclasses: IgG1 (66%), IgG2 (23%), IgG3 (7%) and IgG4 (4%) .

### Application Notes

Optimal dilution of the Human IgG3 antibody should be determined by the researcher.

## **Immunogen**

A synthetic peptide specific to Human IgG3 / IGHG3 was used as the immunogen for the Human IgG3 antibody.

## **Storage**

Store the Human IgG3 antibody at -20oC.