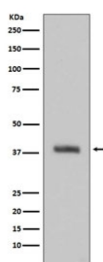


## HTRA2 Antibody [clone EEH-8] (RQ4736)

Catalog No.	Formulation	Size
RQ4736	Antibody in PBS with 0.02% sodium azide, 50% glycerol and 0.4-0.5mg/ml BSA	100 ul

[Bulk quote request](#)

Availability	1-2 weeks
Species Reactivity	Human
Format	Purified
Clonality	Rabbit Monoclonal
Isotype	Rabbit IgG
Clone Name	EEH-8
Purity	Affinity purified
UniProt	O43464
Applications	Western Blot : 1:500-1:2000
Limitations	This HTRA2 antibody is available for research use only.



Western blot testing of human Jurkat cell lysate with HTRA2 antibody. Predicted molecular weight: 38-49 kDa.

### Description

The HTRA2 gene encodes a serine protease. The protein has been localized in the endoplasmic reticulum and interacts with an alternatively spliced form of mitogen-activated protein kinase 14. The protein has also been localized to the mitochondria with release to the cytosol following apoptotic stimulus. The protein is thought to induce apoptosis by binding the apoptosis inhibitory protein baculoviral IAP repeat-containing 4. [RefSeq]

### Application Notes

Optimal dilution of the HTRA2 antibody should be determined by the researcher.

## **Immunogen**

A synthetic peptide specific to human HTRA2 / Omi was used as the immunogen for the HTRA2 antibody.

## **Storage**

Store the HTRA2 antibody at -20oC.